

PÕLLUMAJANDUS ARVUDES
Agriculture in Figures
2011



Sisukord

| | |
|--|----|
| Põllumajandustoodang | 3 |
| Põllumajandussaaduste ressurss ja kasutamine | 14 |
| Taimakasvatus | 33 |
| Loomakasvatus | 51 |
| Selgitused | 60 |

Contents

| | |
|---|----|
| <i>Agricultural output</i> | 3 |
| <i>Supply balance sheets of agricultural products</i> | 14 |
| <i>Crop farming</i> | 33 |
| <i>Livestock farming</i> | 51 |
| <i>Definitions</i> | 62 |

Taskuteatmik esitab põllumajanduse majandusnäitajaid 2010. aasta kohta, samuti põllumajandussaaduste ressursi ja selle kasutamise, põllumajandusmaa kasutamise, põllukultuuride ning viljapuu- ja marjaaedade pinna, saagi ja saagikuse, loomade arvu ja loomakasvatustoodangu ning mineraal- ja orgaanilise väetise kasutamise andmeid 2011. aasta kohta. Siit leiab ka võrdlused varasemate aastatega.

Koostanud Statistikaameti põllumajandusstatistika osakond (Helina Uku, tel 625 9306; Ivar Himma, tel 625 9164).

The pocket-sized reference book provides data on economic indicators of agriculture for 2010, as well as supply balance sheets of agricultural products and agricultural land use, areas under and yields of field crops, fruits and berries, number and production of livestock, use of mineral and organic fertilizers for the year 2011. Comparisons with previous years have been drawn.

Compiled by the Agricultural Statistics Department of Statistics Estonia (Helina Uku, tel +372 625 9306; Ivar Himma, tel +372 625 9164).

Märkide seletus

Explanations of symbols

| | |
|----------|---|
| ... | andmeid ei ole saadud või need on avaldamiseks ebakindlad <i>data not available or too uncertain for publication</i> |
| .. | mõiste ei ole rakendatav <i>category not applicable</i> |
| - | nähtust ei esinenud <i>magnitude nil</i> |
| 0 0,0 | näitaja väärtus alla poole kasutatud mõõtühikust <i>magnitude less than half of the unit employed</i> |

ISSN 1406-1694
ISBN 978-9985-74-497-0

Autoriõigus/Copyright: Statistikaamet, 2012
Kaanefoto/Cover photo: Scanpix

Väljaande andmete kasutamisel või tsiteerimisel palume viidata allikale.
When using or quoting the data included in this issue, please indicate the source.

Põllumajandustoodang, vahetarbimine, lisandväärtus vastava aasta alushinnas, 2008–2010

Agricultural output, intermediate consumption, value added in basic prices of the corresponding year, 2008–2010

(tuhat eurot – thousand euros)

| Näitaja | 2008 | 2009 | 2010 | Indicator |
|--|---------|---------|---------|---|
| Taimekasvatustoodang | 249 729 | 226 538 | 275 266 | Crop output |
| Nisu | 39 174 | 36 336 | 57 129 | Wheat |
| pehmenisu | 39 174 | 36 336 | 57 129 | soft wheat |
| Rukis | 7 554 | 3 049 | 3 776 | Rye |
| Oder | 31 009 | 33 619 | 38 076 | Barley |
| Kaer | 5 905 | 5 127 | 6 391 | Oats |
| Muu teravili (tatar, tritik, segavili) | 3 248 | 2 128 | 2 458 | Other cereals (buckwheat, triticale, mixed grain) |
| Kaunvili | 741 | 829 | 2 212 | Legumes |
| Kartul | 17 838 | 18 075 | 26 902 | Potatoes |
| Õliseeme | 38 659 | 40 415 | 50 486 | Oil seeds |
| raps ja rüps | 38 597 | 40 301 | 50 384 | rape and turnip rape |
| linaseeme | 62 | 114 | 102 | linseeds |
| Köögivilid | 35 117 | 24 232 | 36 620 | Vegetables |
| Puuvili | 6 174 | 6 362 | 5315 | Fruits |
| Söödajuurvili | 24 | 36 | 51 | Fodder roots |
| Rohusöödad | 58 256 | 52 102 | 42 316 | Other forage plants |
| Lilled | 5 092 | 3 447 | 2 190 | Flowers |
| Puukooli toodang | 143 | 166 | 86 | Nursery plants |
| Püsiluhtuuride istandikud | 540 | 298 | 604 | Plantations |
| Seemned (heinaseeme) | 253 | 315 | 654 | Seeds (hayseeds) |
| Loomakasvatustoodang | 342 417 | 280 651 | 320 771 | Animal output |
| Veised | 35 068 | 34 287 | 33 042 | Cattle |
| Sead | 77 236 | 73 270 | 68 507 | Pigs |
| Linnud | 23 011 | 20 920 | 20 414 | Poultry |
| Hobused | 217 | 183 | 166 | Equines |
| Lambad ja kitsed | 3 044 | 2 026 | 2 999 | Sheep and goats |
| Piim | 186 185 | 132 649 | 174 990 | Milk |
| Munad | 10 949 | 10 799 | 11 987 | Eggs |
| Muu loomakasvatustoodang | 6 707 | 6 516 | 8 666 | Other animal products |

Põllumajandustoodang, vahetarbimine, lisandväärtus vastava aasta alushinnas, 2008–2010

Agricultural output, intermediate consumption, value added in basic prices of the corresponding year, 2008–2010

(tuhat eurot – thousand euros)

Järg — Cont.

| Näitaja | 2008 | 2009 | 2010 | Indicator |
|--|---------|---------|---------|--|
| Põllumajandus- likud teenused ja mittepõllumajan- duslik toodang (eraldamatu) | 75 500 | 62 560 | 72 218 | Agricultural ser- vices and output of non-agricultural secondary activ- ities (inseparable) |
| Põllumajanduse majandusharu toodang | 667 646 | 569 749 | 668 255 | Output of the agricultural industry |
| Tootetoetused | 16 408 | 10 208 | 4 428 | Subsidies on products |
| Vahetarbimine kokku | 446 077 | 391 504 | 431 583 | Total intermediate consumption |
| Seemned ja istutusmaterjal | 13 149 | 12 342 | 14 683 | Seeds and planting stocks |
| Loomasööt | 225 482 | 211 835 | 182 274 | Animal feedingstuffs |
| Väetised ja pinnase- parandajad | 30 338 | 24 436 | 28 579 | Fertilizers and soil improvers |
| Taimekaitse- ja kahjuritõrje- vahendid | 12 578 | 10 841 | 15 570 | Plant protection products and pesticides |
| Energia, kütus ja määrdeained | 60 573 | 52 896 | 60 920 | Energy, fuel and lubricants |
| Veterinaarkulud | 8 413 | 7 675 | 9 381 | Veterinary expenses |
| Masinate ja seadmete hooldus ja remont | 25 153 | 21 364 | 27 225 | Maintenance of machinery and equipment |
| Ehitiste hooldus ja remont | 9 164 | 6 283 | 7 634 | Maintenance of buildings |
| Põllumajandus- teenused | 18 962 | 17 411 | 18 127 | Agricultural services |
| Muud kaubad ja teenused | 42 265 | 26 422 | 67 190 | Other goods and services |

Põllumajandustoodang, vahetarbimine, lisandväärtus vastava aasta alushinnas, 2008–2010

Agricultural output, intermediate consumption, value added in basic prices of the corresponding year, 2008–2010

(tuhat eurot – thousand euros)

Järg — Cont.

| Näitaja | 2008 | 2009 | 2010 | Indicator |
|------------------------------------|---------|---------|---------|---|
| Brutolisandväärtus | 221 569 | 178 245 | 236 672 | Gross value added |
| Põhivara kulum | 73 279 | 81 588 | 84 493 | Fixed capital consumption |
| Netolisandväärtus | 148 289 | 96 657 | 152 178 | Net value added |
| Hüvitised töötajatele | 115 990 | 99 451 | 103 057 | Compensation of employees |
| Muud tootmismaksud | 3 355 | 3 275 | 3 090 | Other taxes on production |
| Muud tootmistoetused | 131 976 | 125 447 | 165 034 | Other subsidies on production |
| Tootmisteguritulu | 276 911 | 218 830 | 314 122 | Factor income |
| Tegevuse ülejääk / segatulu | 160 921 | 119 378 | 211 065 | Operating surplus / mixed income |
| Makstud rent | 13 277 | 13 368 | 14 342 | Rents paid |
| Makstud intressid | 25 956 | 20 029 | 13 693 | Interest paid |
| Saadud intressid | 3 269 | 4 978 | 735 | Interest received |
| Ettevõtjatulu | 124 957 | 90 958 | 183 765 | Entrepreneurial income |

Põllumajandustoodang, vahetarbimine, lisandväärtus eelmise aasta alushinnas, 2008–2010

Agricultural output, intermediate consumption, value added in basic prices of the previous year, 2008–2010

(tuhat eurot – thousand euros)

| Näitaja | 2008 | 2009 | 2010 | Indicator |
|--|---------|---------|---------|---|
| Taimakasvatustoodang | 306 597 | 259 000 | 208 346 | Crop output |
| Nisu | 70 258 | 38 049 | 34 928 | Wheat |
| pehmenisu | 70 258 | 38 049 | 34 928 | soft wheat |
| Rukis | 11 995 | 4 302 | 1 991 | Rye |
| Oder | 63 694 | 33 733 | 22 495 | Barley |
| Kaer | 11 749 | 6 510 | 3 165 | Oats |
| Muu teravili (tatar, tritik, segavili) | 5 607 | 3 005 | 1 277 | Other cereals (buckwheat, triticale, mixed grain) |
| Kaunvili | 559 | 2 067 | 1 397 | Legumes |
| Kartul | 16 967 | 26 037 | 21 752 | Potatoes |
| Õliseeme | 38 064 | 47 400 | 38 802 | Oil seeds |
| raps ja rüps | 38 020 | 47 344 | 38 694 | rape and turnip rape |
| linaseeme | 45 | 55 | 108 | linseeds |
| Köögivili | 30 140 | 34 814 | 27 158 | Vegetables |
| Puuvili | 4 746 | 8 391 | 4 278 | Fruits |
| Söödajuurvili | 19 | 40 | 17 | Fodder roots |
| Rohusöödad | 46 546 | 50 625 | 47 478 | Other forage plants |
| Lilled | 5 446 | 3 124 | 2 333 | Flowers |
| Puukooli toodang | 128 | 184 | 98 | Nursery plants |
| Püsiluhturide istandikud | 476 | 299 | 534 | Plantations |
| Seemned (heinaseeme) | 203 | 420 | 644 | Seeds (hayseeds) |
| Loomakasvatustoodang | 305 205 | 347 190 | 283 431 | Animal output |
| Veised | 28 122 | 34 794 | 33 892 | Cattle |
| Sead | 68 259 | 78 287 | 72 860 | Pigs |
| Linnud | 21 569 | 25 030 | 22 875 | Poultry |
| Hobused | 234 | 183 | 166 | Equines |
| Lambad ja kitsed | 3 196 | 1 806 | 2 629 | Sheep and goats |
| Piim | 168 481 | 187 384 | 132 595 | Milk |
| Munad | 8 649 | 12 534 | 11 340 | Eggs |
| Muu loomakasvatustoodang | 6 694 | 7 172 | 7 074 | Other animal products |

Põllumajandustoodang, vahetarbimine, lisandväärtus eelmise aasta alushinnas, 2008–2010

Agricultural output, intermediate consumption, value added in basic prices of the previous year, 2008–2010

(tuhat eurot – thousand euros)

Järg — Cont.

| Näitaja | 2008 | 2009 | 2010 | Indicator |
|---|---------|---------|---------|--|
| Põllumajanduslikud teenused ja mitte-põllumajanduslik toodang (eraldamatu) | 78 898 | 80 263 | 55 127 | Agricultural services and output of non-agricultural secondary activities (inseparable) |
| Põllumajanduse majandusharu toodang | 690 700 | 686 452 | 546 904 | Output of the agricultural industry |
| Vahetarbimine kokku | 392 188 | 435 642 | 416 050 | Total intermediate consumption |
| Seemned ja istutusmaterjal | 11 899 | 13 909 | 16 189 | Seeds and planting stocks |
| Loomasööt | 195 359 | 248 517 | 177 266 | Animal feedingstuffs |
| Väetised ja pinnaseparandajad | 18 836 | 23 324 | 32 188 | Fertilizers and soil improvers |
| Taimekaitse- ja kahjuritõrjevahendid | 11 892 | 10 127 | 15 836 | Plant protection products and pesticides |
| Energia, kütus ja määrdeained | 49 419 | 59 209 | 52 828 | Energy, fuel and lubricants |
| Veterinaarkulud | 8 296 | 7 653 | 9 470 | Veterinary expenses |
| Masinate ja seadmete hooldus ja remont | 24 141 | 21 117 | 25 620 | Maintenance of machinery and equipment |
| Ehitiste hooldus ja remont | 8 779 | 6 881 | 7 840 | Maintenance of buildings |
| Põllumajandus-teenused | 23 646 | 19 491 | 13 297 | Agricultural services |
| Muud kaubad ja teenused | 39 920 | 25 414 | 65 516 | Other goods and services |
| Brutolisandväärtus | 298 512 | 250 811 | 130 854 | Gross value added |
| Põhivara kulum | 77 277 | 79 766 | 81 972 | Fixed capital consumption |
| Netolisandväärtus | 221 235 | 171 044 | 48 882 | Net value added |

Põllumajandussaaduste tootjahinnaindeks, 2009–2011

Agricultural output price index, 2009–2011

(2005=100)

| Näitaja | 2009 | 2010 | 2011 | Indicator |
|---------------------------------------|-------|-------|-------|---|
| Kokku | 97,0 | 117,3 | 138,8 | Total |
| Taimekasvatuse- saadused | 107,1 | 135,7 | 176,2 | Crop production |
| teravili (k.a seeme) | 105,5 | 152,0 | 191,3 | cereals (incl. seeds) |
| tehnilised kultuurid | 123,4 | 156,1 | 216,7 | industrial crops |
| köögivilja ja aiandus- saadused | 94,1 | 106,0 | 114,5 | vegetables and horticultural products |
| värske puuvili ja marjad | 146,0 | 148,7 | 123,7 | fresh fruit and berries |
| kartul (k.a seeme) | 93,4 | 100,6 | 180,6 | potatoes (incl. seeds) |
| muud taimekasvatuse- saadused | 89,8 | 82,7 | 79,6 | other crop products |
| Loomakasvatuse- saadused | 93,1 | 110,1 | 124,3 | Animal production |
| loomad lihaks | 109,0 | 104,4 | 114,2 | animals for slaughter |
| loomsed saadused | 87,6 | 112,1 | 127,8 | animal products |
| piim | 82,2 | 108,4 | 126,1 | milk |
| munad | 130,4 | 137,4 | 126,6 | eggs |
| muud loomsed saadused | 154,5 | 165,2 | 174,1 | other animal products |

Põllumajandussaaduste tootmisvahendi ostuhinnaindeks, 2009–2011

Agricultural input price index, 2009–2011
(2005=100)

| Näitaja | 2009 | 2010 | 2011 | Indicator |
|---|-------|-------|-------|---|
| Kokku | 118,1 | 120,4 | 134,4 | Total |
| Põllumajanduses jooksvalt tarbitavad kaubad ja teenused | 123,4 | 127,3 | 148,2 | Goods and services currently consumed in agriculture |
| seeme | 103,7 | 90,9 | 103,3 | seeds |
| energia, kütus, määrdeained | 132,2 | 149,5 | 170,8 | energy, fuel, lubricants |
| väetised ja pinnaseparandajad | 183,1 | 162,6 | 195,1 | fertilizers and soil improvers |
| taimekaitsevahendid | 115,5 | 113,6 | 113,9 | pesticides |
| veterinaarkulud | 109,8 | 108,8 | 115,8 | veterinary expenses |
| loomasööt | 117,5 | 120,6 | 148,7 | feedingstuffs |
| seadmete hooldus, remont ja materjalid | 112,4 | 119,4 | 126,0 | maintenance of equipment and materials |
| ehitiste hooldus ja remont | 118,8 | 115,7 | 119,2 | maintenance of buildings |
| muud kaubad ja teenused | 115,9 | 118,9 | 119,9 | other goods and services |
| Põllumajanduslike investeeringute kaubad ja teenused | 109,9 | 109,8 | 113,1 | Goods and services contributing to agricultural investments |

Tera- ja kaunvilja ning rapsiseemne kokkuost, 2009–2011
Purchases of grain, legumes and rape seeds, 2009–2011

| Näitaja | 2009 | 2010 | 2011 | Indicator |
|---------------------------|---------|---------|----------|------------------------------|
| Teravili, t | 490 508 | 450 664 | 480 848 | Cereals, t |
| keskmise hind, eurot/tonn | 98,10 | 145,07 | 182,74 | average price per ton, euros |
| Nisu, t | 256 614 | 263 007 | 246 308 | Wheat, t |
| keskmise hind, eurot/tonn | 104,37 | 161,63 | 187,26 | average price per ton, euros |
| Rukis, t | 36 975 | 23 572 | 29 286 | Rye, t |
| keskmise hind, eurot/tonn | 78,04 | 129,14 | 176,24 | average price per ton, euros |
| Oder, t | 152 675 | 129 562 | 176 095 | Barley, t |
| keskmise hind, eurot/tonn | 97,98 | 122,99 | 181,03 | average price per ton, euros |
| Kaer, t | 27 821 | 22 351 | 17 634 | Oats, t |
| keskmise hind, eurot/tonn | 69,54 | 107,58 | 153,69 | average price per ton, euros |
| Tatar, t | - | 20 | 24 | Buckwheat, t |
| keskmise hind, eurot/tonn | - | 939,50 | 1 000,00 | average price per ton, euros |
| Tritik, t | 7 135 | 3 951 | 4 025 | Triticale, t |
| keskmise hind, eurot/tonn | 86,86 | 127,61 | 168,75 | average price per ton, euros |
| Segavili, t | 9 288 | 8 201 | 7 476 | Mixed grain, t |
| keskmise hind, eurot/tonn | 100,79 | 117,39 | 172,85 | average price per ton, euros |
| Kaunvili, t | 2 118 | 5 963 | 9 598 | Legumes, t |
| keskmise hind, eurot/tonn | 168,02 | 176,56 | 204,52 | average price per ton, euros |
| Rapsiseeme, t | 119 978 | 140 354 | 149 605 | Rape seeds, t |
| keskmise hind, eurot/tonn | 274,76 | 350,38 | 439,25 | average price per ton, euros |

Loomade ja piima kokkuost, 2009–2011*Purchases of animals and milk, 2009–2011*

| Näitaja | 2009 | 2010 | 2011 | Indicator |
|-------------------------------|----------|----------|----------|---|
| Veised, tuhat | 38,1 | 36,5 | 30,7 | <i>Cattle, thousands</i> |
| saadud veiseliha, t | 9 079 | 8 572 | 7 227 | <i>received beef, t</i> |
| keskmise hind, eurot/tonn | 1 652,33 | 1 689,03 | 1 830,08 | <i>average price per ton, euros</i> |
| Sead, tuhat | 352,1 | 370,4 | 356,9 | <i>Pigs, thousands</i> |
| saadud sealiha, t | 28 127 | 29 154 | 28 299 | <i>received pork, t</i> |
| keskmise hind, eurot/tonn | 1 596,76 | 1 506,64 | 1 649,77 | <i>average price per ton, euros</i> |
| Lambad ja kitsed, tuhat | 2,6 | 4,5 | 5,1 | <i>Sheep and goats, thousands</i> |
| saadud lamba- ja kitseliha, t | 50,0 | 85,70 | 93,3 | <i>received mutton and goat meat, t</i> |
| keskmise hind, eurot/tonn | 2 296,00 | 2 320,89 | 2 667,74 | <i>average price per ton, euros</i> |
| Piim naturaalkaalus, t | 612 299 | 621 136 | 642 298 | <i>Milk in natural weight, t</i> |
| keskmise hind, eurot/tonn | 210,08 | 277,13 | 322,73 | <i>average price per ton, euros</i> |

Põhiliste põllumajandussaaduste eksport, 2009–2011
Export of main agricultural products, 2009–2011
(tuhat eurot – thousand euros)

| Kaubagrupp kombineeritud nomenklatuuri järgi | 2009 | 2010 | 2011 | Commodity section by Combined Nomenclature |
|---|----------|-----------|-----------|---|
| 01 Elusloomad | 33 238,1 | 30 269,4 | 45 561,7 | 01 Live animals |
| 02 Liha ja söödavrups | 28 896,8 | 38 348,8 | 49 541,9 | 02 Meat and edible meat offal |
| 04 Piim ja piimatooted; linnumunad; naturaalne mesi | 96 294,0 | 145 172,5 | 167 661,4 | 04 Dairy products; bird's eggs; natural honey |
| 07 Köögivili ning söödavad juured ja mugulad | 4 321,2 | 6 969,8 | 8 575,0 | 07 Edible vege- tables and certain roots and tubers |
| 08 Söödavad puuviljad, mar- jad ja pähklid; tsitrusviljade ja melonite koor | 10 270,0 | 18 019,7 | 22 796,5 | 08 Edible fruit and nuts; peel of citrus fruit or melons |
| 10 Teravili | 23 856,6 | 34 646,9 | 64 434,1 | 10 Cereals |
| 11 Jahvatus- tööstuse tooted; linnased; tärklis; inuliin; nisugluteen | 9 661,1 | 10 955,7 | 13 032,5 | 11 Products of the milling industry; malt; starches; inulin; wheat gluten |
| 12 Õliseemned ja -viljad; muud seemned ja viljad | 21 611,8 | 26 252,4 | 43 795,8 | 12 Oil seeds and oleaginous fruits; miscellaneous grains, seeds and fruit |
| 15 Loomsed ja taimsed rasvad ning õlid, loomsed ja taimsed vahad | 28 875,4 | 42 861,0 | 40 647,3 | 15 Animal and vegetable fats and oils; animal or vegetable waxes |

Põhiliste põllumajandussaaduste import, 2009–2011*Import of main agricultural products, 2009–2011*

(tuhat eurot – thousand euros)

| Kaubagrupp kombineeritud nomenklatuuri järgi | 2009 | 2010 | 2011 | Commodity section by Combined Nomenclature |
|---|----------|----------|-----------|---|
| 01 Elusloomad | 1 504,5 | 1 210,3 | 2 038,2 | 01 Live animals |
| 02 Liha ja söödav rups | 72 116,3 | 82 823,8 | 103 033,0 | 02 Meat and edible meat offal |
| 04 Piim ja piimatooted; linnumunad; naturaalne mesi | 39 837,4 | 55 208,2 | 54 929,9 | 04 Dairy products; bird's eggs; natural honey |
| 07 Köögivili ning söödavad juured ja mugulad | 34 248,5 | 40 937,3 | 41 664,9 | 07 Edible vegetables and certain roots and tubers |
| 08 Söödavad puuviljad, marjad ja pähklid; tsitrusviljade ja melonite koor | 60 992,9 | 68 615,7 | 80 088,9 | 08 Edible fruit and nuts; peel of citrus fruit or melons |
| 10 Teravili | 9 818,8 | 14 441,4 | 21 607,5 | 10 Cereals |
| 11 Jahvatustöös- tuse tooted; linnased; tärklis; inuliin; nisugluteen | 20 813,4 | 17 386,5 | 24 469,3 | 11 Products of the milling industry; malt; starches; inulin; wheat gluten |
| 12 Õliseemned ja -viljad; muud seemned ja viljad | 6 875,6 | 13 924,4 | 14 343,4 | 12 Oil seeds and oleaginous fruits; miscellaneous grains, seeds and fruit |
| 15 Loomsed ja taimsed rasvad ning õlid, loomsed ja taimsed vahad | 47 389,4 | 26 813,5 | 34 342,4 | 15 Animal and vegetable fats and oils; animal or vegetable waxes |

Teravilja ressurss ja kasutamine, 2008/2009–2010/2011*Supply balance sheet of cereals, 2008/2009–2010/2011*

(tonni – tons)

| Näitaja | 01.07–30.06 | | | Indicator |
|--|-------------|-----------|-----------|--|
| | 2008/2009 | 2009/2010 | 2010/2011 | |
| Saak | 864 222 | 873 466 | 678 364 | Production |
| Import | 187 475 | 136 191 | 190 462 | Imports |
| Ressurss ja kasutamine | 1 051 697 | 1 009 657 | 868 826 | Total resources and use |
| Eksport | 320 478 | 259 925 | 298 493 | Exports |
| Varude muutus | 22 492 | 21 484 | –75 269 | Change in stocks |
| Tarbimine kokku | 708 727 | 728 248 | 645 602 | Domestic use |
| seemnena | 71 867 | 68 985 | 67 659 | seeds |
| kadu | 5 290 | 5 762 | 3 024 | losses |
| loomasöödana | 492 996 | 516 566 | 439 453 | animal feed |
| tööstuslik tarbimine ^a | 28 473 | 25 423 | 27 070 | industrial use ^a |
| inimtarbimine (terakaalus) | 110 101 | 111 512 | 108 396 | human consumption (gross) |
| inimtarbimine (tootekaalus) ^b | 84 531 | 87 699 | 84 977 | human consumption (net) ^b |
| tarbimine inimese kohta (terakaalus), kilogrammi ^c | 82,1 | 83,2 | 80,9 | human consumption (gross) per capita, kilograms ^c |
| tarbimine inimese kohta (tootekaalus), kilogrammi ^c | 63,1 | 65,4 | 63,4 | human consumption (net) per capita, kilograms ^c |

^a Õlle, alkoholjookide ja muude toodete valmistamiseks, v.a toit ja loomasööd.^b Ümber arvestatud jahu ekvivalentiks.^c Arvestuses on kasutatud aruandeaasta 1. jaanuari rahvaarvu.^a For the manufacture of beer, alcoholic beverages and other products except for food and animal feed.^b Grain equivalent has been converted into the flour equivalent.^c In calculations, the population number as of 1 January of the crop year has been used.

Nisu ressurss ja kasutamine, 2008/2009–2010/2011^a

Supply balance sheet of wheat, 2008/2009–2010/2011^a

(tonni – tons)

| Näitaja | 01.07–30.06 | | | Indicator |
|--|-------------|-----------|-----------|--|
| | 2008/2009 | 2009/2010 | 2010/2011 | |
| Saak | 342 448 | 342 520 | 327 599 | Production |
| Import | 86 806 | 55 037 | 68 078 | Imports |
| kõvanisu | 9 917 | 9 283 | 8 157 | durum wheat |
| Ressurss ja kasutamine | 429 254 | 397 557 | 395 677 | Total resources and use |
| Eksport | 152 915 | 132 770 | 148 155 | Exports |
| kõvanisu | 1 232 | 1 800 | 1 326 | durum wheat |
| Varude muutus | 9 269 | –15 903 | –370 | Change in stocks |
| Tarbimine kokku | 267 070 | 280 690 | 247 892 | Domestic use |
| seemnena | 27 916 | 29 866 | 31 819 | seeds |
| kadu | 2 129 | 2 372 | 1 537 | losses |
| loomasöödana | 165 841 | 179 325 | 144 991 | animal feed |
| tööstuslik tarbimine ^b | 841 | 0 | 0 | industrial use ^b |
| inimtarbimine (terakaalus) | 70 343 | 69 127 | 69 545 | human consumption (gross) |
| inimtarbimine (tootekaalus) ^c | 50 487 | 49 898 | 50 195 | human consumption (net) ^c |
| tarbimine inimese kohta (terakaalus), kilogrammi ^d | 52,5 | 51,6 | 51,9 | human consumption (gross) per capita, kilograms ^d |
| tarbimine inimese kohta (tootekaalus), kilogrammi ^d | 37,7 | 37,2 | 37,5 | human consumption (net) per capita, kilograms ^d |

^a Koos kõvanisuga.

^b Õlle, alkohooljookide ja muude toodete valmistamiseks, v.a toit ja loomasööt.

^c Ümber arvestatud jahu ekvivalendiks.

^d Arvestuses on kasutatud aruandeaasta 1. jaanuari rahvaarvu.

^a Including durum wheat.

^b For the manufacture of beer, alcoholic beverages and other products except for food and animal feed.

^c Grain equivalent has been converted into the flour equivalent.

^d In calculations, the population number as of 1 January of the crop year has been used.

Rukki ressurss ja kasutamine, 2008/2009–2010/2011*Supply balance sheet of rye, 2008/2009–2010/2011*

(tonni – tons)

| Näitaja | 01.07–30.06 | | | Indicator |
|--|-------------|-----------|-----------|--|
| | 2008/2009 | 2009/2010 | 2010/2011 | |
| Saak | 65 634 | 39 069 | 25 012 | Production |
| Import | 14 786 | 12 854 | 15 728 | Imports |
| Ressurss ja kasutamine | 80 420 | 51 923 | 40 740 | Total resources and use |
| Eksport | 31 681 | 23 002 | 12 220 | Exports |
| Varude muutus | 4 880 | –14 275 | –135 | Change in stocks |
| Tarbimine kokku | 43 859 | 43 196 | 28 655 | Domestic use |
| seemnena | 3 326 | 3 381 | 2 626 | seeds |
| kadu | 567 | 826 | 190 | losses |
| loomasöödana | 11 097 | 8 983 | 226 | animal feed |
| tööstuslik tarbimine ^a | 858 | 1 101 | 1 143 | industrial use ^a |
| inimtarbimine (terakaalus) | 28 011 | 28 905 | 24 470 | human consumption (gross) |
| inimtarbimine (tootekaalus) ^b | 24 832 | 25 693 | 21 751 | human consumption (net) ^b |
| tarbimine inimese kohta (terakaalus), kilogrammi ^c | 20,9 | 21,6 | 18,3 | human consumption (gross) per capita, kilograms ^c |
| tarbimine inimese kohta (tootekaalus), kilogrammi ^c | 18,5 | 19,2 | 16,2 | human consumption (net) per capita, kilograms ^c |

^a Õlle, alkohooljookide ja muude toodete valmistamiseks, v.a toit ja loomasööd.^b Ümber arvestatud jahu ekvivalendiks.^c Arvestuses on kasutatud aruandeaasta 1. jaanuari rahvaarvu.^a For the manufacture of beer, alcoholic beverages and other products except for food and animal feed.^b Grain equivalent has been converted into the flour equivalent.^c In calculations, the population number as of 1 January of the crop year has been used.

Odra ressurss ja kasutamine, 2008/2009–2010/2011

Supply balance sheet of barley, 2008/2009–2010/2011

(tonni – tons)

| Näitaja | 01.07–30.06 | | | Indicator |
|--|----------------|----------------|----------------|--|
| | 2008/2009 | 2009/2010 | 2010/2011 | |
| Saak | 349 166 | 376 945 | 254 809 | Production |
| Import | 37 790 | 36 672 | 69 767 | Imports |
| Ressurss ja kasutamine | 386 956 | 413 617 | 324 576 | Total resources and use |
| Eksport | 104 170 | 76 554 | 126 380 | Exports |
| Varude muutus | 16 159 | 57 418 | –70 108 | Change in stocks |
| Tarbimine kokku | 266 627 | 279 645 | 268 304 | Domestic use |
| seemnena | 29 922 | 25 734 | 24 562 | seeds |
| kadu | 2 143 | 1 876 | 1 024 | losses |
| loomasöödana | 204 223 | 224 059 | 212 872 | animal feed |
| tööstuslik tarbimine ^a | 26 684 | 24 322 | 25 927 | industrial use ^a |
| inimtarbimine (terakaalus) | 3 655 | 3 654 | 3 919 | human consumption (gross) |
| inimtarbimine (tootekaalus) ^b | 2 897 | 2 884 | 3 093 | human consumption (net) ^b |
| tarbimine inimese kohta (terakaalus), kilogrammi ^c | 2,7 | 2,7 | 2,9 | human consumption (gross) per capita, kilograms ^c |
| tarbimine inimese kohta (tootekaalus), kilogrammi ^c | 2,2 | 2,2 | 2,3 | human consumption (net) per capita, kilograms ^c |

^a Õlle, alkoholjookide ja muude toodete valmistamiseks, v.a toit ja loomasööt.

^b Ümber arvestatud jahu ekvivalendiks.

^c Arvestuses on kasutatud aruandeaasta 1. jaanuari rahvaarvu.

^a For the manufacture of beer, alcoholic beverages and other products except for food and animal feed.

^b Grain equivalent has been converted into the flour equivalent.

^c In calculations, the population number as of 1 January of the crop year has been used.

Kaera ressurss ja kasutamine, 2008/2009–2010/2011

Supply balance sheet of oats, 2008/2009–2010/2011

(tonni – tons)

| Näitaja | 01.07–30.06 | | | Indicator |
|--|-------------|-----------|-----------|--|
| | 2008/2009 | 2009/2010 | 2010/2011 | |
| Saak | 77 507 | 86 504 | 54 472 | Production |
| Import | 2 918 | 2 793 | 4 515 | Imports |
| Ressurss ja kasutamine | 80 425 | 89 297 | 58 987 | Total resources and use |
| Eksport | 24 796 | 23 726 | 9 482 | Exports |
| Varude muutus | 3 647 | –4 533 | –3 264 | Change in stocks |
| Tarbimine kokku | 51 982 | 70 104 | 52 769 | Domestic use |
| seemnena | 7 932 | 7 286 | 5 869 | seeds |
| kadu | 257 | 630 | 220 | losses |
| loomasöödana | 41 993 | 60 238 | 44 279 | animal feed |
| tööstuslik tarbimine ^a | 49 | - | - | industrial use ^a |
| inimtarbimine (terakaalus) | 1 751 | 1 950 | 2 401 | human consumption (gross) |
| Inimtarbimine (tootekaalus) ^b | 1 680 | 1 948 | 2 399 | human consumption (net) ^b |
| tarbimine inimese kohta (terakaalus), kilogrammi ^c | 1,3 | 1,5 | 1,8 | human consumption (gross) per capita, kilograms ^c |
| tarbimine inimese kohta (tootekaalus), kilogrammi ^c | 1,2 | 1,5 | 1,8 | human consumption (net) per capita, kilograms ^c |

^a Õlle, alkoholjookide ja muude toodete valmistamiseks, v.a toit ja loomasööd.

^b Ümber arvestatud jahu ekvivalentiks.

^c Arvestuses on kasutatud aruandeaasta 1. jaanuari rahvaarvu.

^a For the manufacture of beer, alcoholic beverages and other products except for food and animal feed.

^b Grain equivalent has been converted into the flour equivalent.

^c In calculations, the population number as of 1 January of the crop year has been used.

Kuivatatud kaunvilja ressurss ja kasutamine, 2008/2009–2010/2011

Supply balance sheet of dried pulses, 2008/2009–2010/2011

(tonni – tons)

| Näitaja | 01.07–30.06 | | | Indicator |
|--|--------------|--------------|---------------|--|
| | 2008/2009 | 2009/2010 | 2010/2011 | |
| Saak | 3 309 | 7 600 | 12 553 | Production |
| Import | 614 | 824 | 1 130 | Imports |
| Ressurss ja kasutamine | 3 923 | 8 424 | 13 683 | Total resources and use |
| Eksport | 75 | 1 871 | 4 412 | Exports |
| Varude muutus | –418 | 1 | 1 143 | Change in stocks |
| Tarbimine kokku | 4 266 | 6 552 | 8 128 | Domestic use |
| seemnena | 1 103 | 1 393 | 2 115 | seeds |
| kadu | 41 | 6 | 0 | losses |
| loomasöödana | 2 067 | 3 860 | 4 598 | animal feed |
| inimtarbimine | 1 055 | 1 293 | 1 415 | human consumption |
| tarbimine inimese kohta, kilogrammi ^a | 0,8 | 1,0 | 1,1 | human consumption per capita, kilograms ^a |

^a Arvestuses on kasutatud aruandeaasta 1. jaanuari rahvaarvu.

^a In calculations, the population number as of 1 January of the crop year has been used.

Kartuli ressurss ja kasutamine, 2008/2009–2010/2011*Supply balance sheet of potatoes, 2008/2009–2010/2011*

(tonni – tons)

| Näitaja | 01.07–30.06 | | | Indicator |
|---|-------------|-----------|-----------|--|
| | 2008/2009 | 2009/2010 | 2010/2011 | |
| Saak | 125 225 | 139 050 | 163 373 | Production |
| Import | 27 818 | 24 218 | 28 776 | Imports |
| Ressurss ja kasutamine | 153 043 | 163 268 | 192 149 | Total resources and use |
| Eksport | 1 443 | 2 224 | 13 640 | Exports |
| Varude muutus | –269 | 327 | 580 | Change in stocks |
| Tarbimine kokku | 151 869 | 160 717 | 177 929 | Domestic use |
| seemnena | 25 737 | 24 517 | 26 188 | seeds |
| kadu | 2 505 | 3 476 | 3 915 | losses |
| loomasöödana | 10 750 | 12 650 | 20 510 | animal feed |
| tööstuslik tarbimine ^a | - | - | - | industrial use ^a |
| inimtarbimine | 112 877 | 120 074 | 127 316 | human consumption |
| tarbimine inimese kohta, kilo-grammi ^b | 84,2 | 89,6 | 95,0 | human consumption per capita, kilograms ^b |

^a Tärklise, alkoholjookide ja muude toodete valmistamiseks, v.a toit ja loomasööt.^b Arvestuses on kasutatud aruandeaasta 1. jaanuari rahvaarvu.^a For the manufacture of starch, alcoholic beverages and other products except for food and animal feed.^b In calculations, the population number as of 1 January of the crop year has been used.

Köögivilja ressurss ja kasutamine, 2008/2009–2010/2011

Supply balance sheet of vegetables, 2008/2009–2010/2011

(tonni – tons)

| Näitaja | 01.07–30.06 | | | Indicator |
|--|-------------|-----------|-----------|--|
| | 2008/2009 | 2009/2010 | 2010/2011 | |
| Saak | 64 499 | 70 624 | 73 889 | Production |
| Import | 51 635 | 52 156 | 50 052 | Imports |
| Ressurss ja kasutamine | 116 134 | 122 780 | 123 941 | Total resources and use |
| Eksport | 2 312 | 1 722 | 2 166 | Exports |
| Varude muutus | 98 | 337 | –244 | Change in stocks |
| Tarbimine kokku | 113 724 | 120 721 | 122 019 | Domestic use |
| seemnena | 0 | 0 | 0 | seeds |
| kadu | 6 248 | 6 784 | 8 859 | losses |
| loomasöödana | 65 | 0 | 0 | animal feed |
| tööstuslik tarbimine ^a | - | - | - | industrial use ^a |
| inimtarbimine | 107 411 | 113 937 | 113 160 | human consumption |
| tarbimine inimese kohta, kilogrammi ^b | 80,0 | 85,0 | 84,4 | human consumption per capita, kilograms ^b |

^aVa toidu ja loomasööda valmistamiseks.

^bArvestuses on kasutatud aruandeaasta 1. jaanuari rahvaarvu.

^aExcept for the manufacture of food and animal feed.

^bIn calculations, the population number as of 1 January of the crop year has been used.

**Värske puuvilja ja marjade ressurss ja kasutamine,
2008/2009–2010/2011^a***Supply balance sheet of fresh fruits and berries, 2008/2009–2010/2011^a*
(tonni – tons)

| Näitaja | 01.07–30.06 | | | Indicator |
|--|-------------|-----------|-----------|--|
| | 2008/2009 | 2009/2010 | 2010/2011 | |
| Saak | 5 486 | 9 773 | 5 071 | Production |
| Import | 65 007 | 62 452 | 59 725 | Imports |
| Ressurss ja kasutamine | 70 493 | 72 225 | 64 796 | Total resources and use |
| Eksport | 1 840 | 3 253 | 2 820 | Exports |
| Varude muutus | –467 | –166 | –286 | Change in stocks |
| Tarbimine kokku | 69 120 | 69 138 | 62 262 | Domestic use |
| kadu | 7 511 | 7 228 | 6 982 | losses |
| loomasöödana | 0 | 0 | 0 | animal feed |
| tööstuslik tarbimine ^b | 1 347 | 1 362 | 1 810 | industrial use ^b |
| inimtarbimine | 60 262 | 60 548 | 53 470 | human consumption |
| tarbimine inimese kohta, kilogrammi ^c | 45,0 | 45,2 | 39,9 | human consumption per capita, kilograms ^c |

^a Koos tsitruseliste ja troopiliste puuviljade ja marjadega.^b Kääritatud mahla ja alkoholjookide valmistamiseks.^c Arvestuses on kasutatud aruandeaasta 1. jaanuari rahvaarvu.^a Including the citrus and tropical fruits and berries.^b For the manufacture of fermented juice and alcoholic beverages.^c In calculations, the population number as of 1 January of the crop year has been used.

Õliseemne ja -vilja ressurss ja kasutamine, 2008/2009–2010/2011^a

Supply balance sheet of oleaginous seeds and fruits, 2008/2009–2010/2011^a
(tonni – tons)

| Näitaja | 01.07–30.06 | | | Indicator |
|--|-------------|-----------|-----------|--|
| | 2008/2009 | 2009/2010 | 2010/2011 | |
| Saak | 111 341 | 136 167 | 131 179 | Production |
| Import | 8 013 | 11 357 | 8 999 | Imports |
| Ressurss ja kasutamine | 119 354 | 147 524 | 140 178 | Total resources and use |
| Eksport | 34 797 | 67 016 | 73 537 | Exports |
| Varude muutus | –3 245 | –15 017 | 14 899 | Change in stocks |
| Tarbimine kokku | 87 802 | 95 525 | 51 742 | Domestic use |
| seemnena | 505 | 594 | 530 | seeds |
| kadu | 1 739 | 916 | 1 072 | losses |
| loomasöödana | 589 | 753 | 733 | animal feed |
| tööstuslik tarbimine ^b | 81 952 | 90 789 | 46 903 | industrial use ^b |
| inimtarbimine | 3 017 | 2 473 | 2 504 | human consumption |
| tarbimine inimese kohta, kilogrammi ^c | 2,3 | 1,8 | 1,9 | human consumption per capita, kilograms ^c |

^a Rapsi- või rüpsiseeme, päevalilliseeme, sojauba, linaseeme, puuvillaseeme, riitsinuseeme, sinepiseeme, mooniseeme, seesamiseeme, maapähkel, palmipähkel, kopra, oliivid ja teised puuviljad.

^b Taimse rasva, õli ja õlikoogi valmistamiseks.

^c Arvestuses on kasutatud aruandeaasta 1. jaanuari rahvaarvu.

^a Colza and the rape seed, the sunflower, soya, flax, cotton, ricinus, mustard, poppy, sesame seeds, groundnuts, palm nuts and almonds, copra, olives and other fruits.

^b For the manufacture of vegetable fats, oils and oil cakes.

^c In calculations, the population number as of 1 January of the crop year has been used.

Taimse rasva ja õli ressurss ja kasutamine, 2008/2009–2010/2011^a*Supply balance sheet of vegetable fats and oils, 2008/2009–2010/2011^a*
(tonni – tons)

| Näitaja | 01.07–30.06 | | | Indicator |
|--|-------------|-----------|-----------|--|
| | 2008/2009 | 2009/2010 | 2010/2011 | |
| Toodang | 29 318 | 23 533 | 12 957 | Production |
| Import | 58 789 | 43 410 | 20 717 | Imports |
| Ressurss ja kasutamine | 88 107 | 66 943 | 33 674 | Total resources and use |
| Eksport | 43 932 | 40 297 | 22 176 | Exports |
| Varude muutus | 45 | 1 027 | 225 | Change in stocks |
| Tarbimine kokku | 44 130 | 25 619 | 11 273 | Domestic use |
| kadu | 1 173 | 787 | 354 | losses |
| loomasöödana | 489 | 372 | 315 | animal feed |
| tööstuslik tarbimine ^b | 27 083 | 9 690 | 2 495 | industrial use ^b |
| inimtarbimine | 15 385 | 14 770 | 8 109 | human consumption |
| tarbimine inimese kohta, kilogrammi ^c | 11,5 | 11,0 | 6,1 | human consumption per capita, kilograms ^c |

^a Ümber arvestatud toorõlilis.^b Margariini, muude rasvade, õli, kosmeetika-, farmaatsia- ja teiste keemiatööstustoodete valmistamiseks.^c Arvestuses on kasutatud aruandeaasta 1. jaanuari rahvaarvu.^a Products are evaluated in crude oil equivalent.^b For the manufacture of margarine and other prepared fats or oils and cosmetic, pharmaceutical and other products of the chemical industry.^c In calculations, the population number as of 1 January of the crop year has been used.

Suhkruressurss ja kasutamine, 2008/2009–2010/2011^a

Supply balance sheet of sugar, 2008/2009–2010/2011^a

(tonni – tons)

| Näitaja | 01.10–30.09 | | | Indicator |
|--|-------------|-----------|-----------|--|
| | 2008/2009 | 2009/2010 | 2010/2011 | |
| Toodang ^b | - | - | - | Production ^b |
| Import | 74 245 | 78 020 | 66 564 | Imports |
| valge suhkur | 52 064 | 53 679 | 39 476 | white sugar |
| suhkrut sisaldavad tooted | 20 974 | 23 824 | 26 850 | products containing added sugar |
| Ressurss ja kasutamine | 74 245 | 78 020 | 66 564 | Total resources and use |
| Eksport | 18 854 | 16 136 | 14 586 | Exports |
| valge suhkur | 4 981 | 5 622 | 3 449 | white sugar |
| suhkrut sisaldavad tooted | 13 850 | 10 503 | 9 463 | products containing added sugar |
| Varude muutus | -349 | 1 991 | -1 838 | Change in stocks |
| Tarbimine kokku | 55 740 | 59 893 | 53 816 | Domestic use |
| loomasöödana | 494 | 543 | 559 | animal feed |
| tööstuslik tarbimine ^c | - | - | - | industrial use ^c |
| inimtarbimine | 55 246 | 59 350 | 53 257 | human consumption |
| tarbimine inimese kohta, kilogrammi ^d | 41,2 | 44,3 | 39,7 | human consumption per capita, kilograms ^d |

^a Suhkrut sisaldavad tooted on ümber arvestatud valgeks suhkruks.

^b Eestis ei toodeta valget suhkrut.

^c Alkohooljookide ja muude toodete valmistamiseks, v.a toit ja loomasööd.

^d Arvestuses on kasutatud aruandeaasta 1. jaanuari rahvaarvu.

^a Products containing added sugar are evaluated in white sugar equivalent.

^b White sugar is not produced in Estonia.

^c For the manufacture of alcoholic beverages and other products except for food and animal feed.

^d In calculations, the population number as of 1 January of the crop year has been used.

Viinamarjaveini ressurss ja kasutamine, 2008/2009–2010/2011*Supply balance sheet of wine, 2008/2009–2010/2011*

(tonni – tons)

| Näitaja | 01.08–31.07 | | | Indicator |
|---|----------------|----------------|----------------|--|
| | 2008/2009 | 2009/2010 | 2010/2011 | |
| Toodang ^a | - | - | - | Production ^a |
| Import | 169 889 | 184 692 | 203 589 | Imports |
| valge kaitstud päritolunimetu-sega vein | .. | 27 590 | 45 373 | white wines with a protected designation of origin |
| valge kvaliteetvein | 11 530 | .. | .. | white quality wine |
| punane kaitstud päritolunimetu-sega vein | .. | 26 986 | 33 830 | red wines with a protected designation of origin |
| punane kvaliteetvein | 17 668 | .. | .. | red quality wine |
| muu vein | 140 691 | 130 116 | 124 386 | other wine |
| Ressurss ja kasutamine | 169 889 | 184 692 | 203 589 | Total resources and use |
| Eksport | 38 192 | 42 184 | 47 880 | Exports |
| valge kaitstud päritolunimetu-sega vein | .. | 5 421 | 7 222 | white wines with a protected designation of origin |
| valge kvaliteetvein | 1 836 | .. | .. | white quality wine |
| punane kaitstud päritolunimetu-sega vein | .. | 12 417 | 11 646 | red wines with a protected designation of origin |
| punane kvaliteetvein | 3 424 | .. | .. | red quality wine |
| muu vein | 32 932 | 24 346 | 29 012 | other wine |
| Varude muutus | -2 014 | -156 | 4 061 | Change in stocks |
| Tarbimine kokku | 133 711 | 142 664 | 151 648 | Domestic use |
| kadu | 0 | 0 | 0 | losses |
| tööstuslik tarbimine ^b | 0 | 0 | 0 | industrial use ^b |
| inimtarbimine | 133 711 | 142 664 | 151 648 | human consumption |
| tarbimine inimese kohta, liitrit ^c | 10,0 | 10,7 | 11,3 | human consumption per capita, litres ^c |

^a Eestis viinamarjaveini ei toodeta.^b Alkohooljookide valmistamiseks destilleerimisel.^c Arvestuses on kasutatud aruandeaasta 1. jaanuari rahvaarvu.^a Grape wine is not produced in Estonia.^b For the manufacture of alcoholic beverages in distillation.^c In calculations, the population number as of 1 January of the crop year has been used.

Liha ressurss ja kasutamine, 2009–2011^a

Supply balance sheet of meat, 2009–2011^a

(tuhat tonni – thousand tons)

| Näitaja | 01.01–31.12 | | | Indicator |
|--|--------------|--------------|--------------|--|
| | 2009 | 2010 | 2011 | |
| Toodang ^b | 79,2 | 79,0 | 83,1 | Gross indigenous ^b production |
| Elusloomade import | 0,2 | 0,0 | 0,3 | Imports of live animals |
| Liha import | 54,0 | 63,7 | 68,0 | Imports of meat |
| Ressurss ja kasutamine | 133,4 | 142,7 | 151,4 | Total resources and use |
| Elusloomade eksport | 14,3 | 13,7 | 17,4 | Exports of live animals |
| Liha eksport | 24,4 | 31,5 | 39,1 | Exports of meat |
| Varude muutus | –3,8 | 3,5 | –3,1 | Change in stocks |
| Tarbimine kokku | 98,5 | 94,0 | 98,0 | Domestic use |
| kadu | 0,1 | 0,1 | 0,1 | losses |
| loomasöödana | 0,0 | 0,0 | 0,0 | animal feed |
| inimtarbimine | 98,4 | 93,9 | 97,9 | human consumption |
| tarbimine inimese kohta, kilogrammi ^c | 73,4 | 70,1 | 73,1 | human consumption per capita, kilograms ^c |

^a Veiseliha, sealiha, lamba- ja kitseliha, linnuliha, muude loomade liha, rupsid tapakaalus.

^b Eesti territooriumil tapetud loomad pluss elusloomade eksport miinus elusloomade import.

^c Arvestuses on kasutatud aastakeskmist rahvaarvu.

^a Beef, pork, mutton and goat meat, poultry, meat of other animals, offals; in carcass weight.

^b As the sum of slaughtering in the territory of Estonia plus exports of live animals minus imports of live animals.

^c In calculations the mean annual population number has been used.

Veiseliha ressurss ja kasutamine, 2009–2011^a*Supply balance sheet of beef, 2009–2011^a**(tuhat tonni – thousand tons)*

| Näitaja | 01.01–31.12 | | | Indicator |
|--|-------------|-------------|-------------|--|
| | 2009 | 2010 | 2011 | |
| Toodang ^b | 15,2 | 14,2 | 12,3 | Gross indigenous ^b production |
| Elusloomade import | 0,0 | 0,0 | 0,2 | Imports of live animals |
| Liha import | 4,3 | 5,6 | 7,3 | Imports of meat |
| Ressurss ja kasutamine | 19,5 | 19,8 | 19,8 | Total resources and use |
| Elusloomade eksport | 1,3 | 1,9 | 1,3 | Exports of live animals |
| Liha eksport | 1,9 | 2,8 | 3,4 | Exports of meat |
| Varude muutus | –0,6 | –0,2 | –0,2 | Change in stocks |
| Tarbimine kokku | 16,9 | 15,3 | 15,3 | Domestic use |
| kadu | 0,0 | 0,0 | 0,0 | losses |
| loomasöödana | 0,0 | 0,0 | 0,0 | animal feed |
| inimtarbimine | 16,9 | 15,3 | 15,3 | human consumption |
| tarbimine inimese kohta, kilogrammi ^c | 12,6 | 11,4 | 11,4 | human consumption per capita, kilograms ^c |

^aTapakaalus.^bEesti territooriumil tapetud loomad pluss elusloomade eksport miinus elusloomade import.^cArvestuses on kasutatud aastakeskmist rahvaarvu.^dIn carcass weight.^eAs the sum of slaughtering in the territory of Estonia plus exports of live animals minus imports of live animals.^fIn calculations the mean annual population number has been used.

Sealiha ressurss ja kasutamine, 2009–2011^a

Supply balance sheet of pork, 2009–2011^a

(tuhat tonni – thousand tons)

| Näitaja | 01.01–31.12 | | | Indicator |
|--|-------------|-------------|-------------|--|
| | 2009 | 2010 | 2011 | |
| Toodang ^b | 45,9 | 45,8 | 50,4 | Gross indigenous ^b production |
| Elusloomade import | 0,2 | 0,0 | 0,0 | Imports of live animals |
| Liha import | 25,8 | 30,6 | 33,2 | Imports of meat |
| Ressurss ja kasutamine | 71,9 | 76,4 | 83,6 | Total resources and use |
| Elusloomade eksport | 13,0 | 11,8 | 16,0 | Exports of live animals |
| Liha eksport | 15,2 | 19,4 | 21,9 | Exports of meat |
| Varude muutus | -2,4 | 2,8 | -1,9 | Change in stocks |
| Tarbimine kokku | 46,1 | 42,4 | 47,6 | Domestic use |
| kadu | 0,1 | 0,1 | 0,1 | losses |
| loomasöödana | 0,0 | 0,0 | 0,0 | animal feed |
| inimtarbimine | 46,0 | 42,3 | 47,5 | human consumption |
| tarbimine inimese kohta, kilogrammi ^c | 34,3 | 31,6 | 35,5 | human consumption per capita, kilograms ^c |

^aTapakaalus.

^bEesti territooriumil tapetud loomad pluss elusloomade eksport miinus elusloomade import.

^cArvestuses on kasutatud aastakeskmist rahvaarvu.

^a In carcass weight.

^b As the sum of slaughtering in the territory of Estonia plus exports of live animals minus imports of live animals.

^c In calculations the mean annual population number has been used.

Lamba- ja kitseliha ressurss ja kasutamine, 2009–2011^a*Supply balance sheet of mutton and goat meat, 2009–2011^a**(tuhat tonni – thousand tons)*

| Näitaja | 01.01–31.12 | | | Indicator |
|--|-------------|------------|------------|--|
| | 2009 | 2010 | 2011 | |
| Toodang ^b | 0,8 | 0,7 | 0,7 | Gross indigenous ^b production |
| Elusloomade import | 0,0 | 0,0 | 0,0 | Imports of live animals |
| Liha import | 0,1 | 0,1 | 0,2 | Imports of meat |
| Ressurss ja kasutamine | 0,9 | 0,8 | 0,9 | Total resources and use |
| Elusloomade eksport | 0,0 | 0,0 | 0,1 | Exports of live animals |
| Liha eksport | 0,0 | 0,1 | 0,1 | Exports of meat |
| Varude muutus | 0,0 | 0,0 | 0,0 | Change in stocks |
| Tarbimine kokku | 0,9 | 0,7 | 0,7 | Domestic use |
| kadu | 0,0 | 0,0 | 0,0 | losses |
| loomasöödana | 0,0 | 0,0 | 0,0 | animal feed |
| inimtarbimine | 0,9 | 0,7 | 0,7 | human consumption |
| tarbimine inimese kohta, kilogrammi ^c | 0,7 | 0,5 | 0,5 | human consumption per capita, kilograms ^c |

^aTapakaalus.^bEesti territooriumil tapetud loomad pluss elusloomade eksport miinus elusloomade import.^cArvestuses on kasutatud aastakeskmist rahvaarvu.^aIn carcass weight.^bAs the sum of slaughterings in the territory of Estonia plus exports of live animals minus imports of live animals.^cIn calculations the mean annual population number has been used.

Linnuliha ressurss ja kasutamine, 2009–2011^a

Supply balance sheet of poultry meat, 2009–2011^a

(tuhat tonni – thousand tons)

| Näitaja | 01.01–31.12 | | | Indicator |
|--|-------------|-------------|-------------|--|
| | 2009 | 2010 | 2011 | |
| Toodang ^b | 14,9 | 16,0 | 17,4 | Gross indigenous ^b production |
| Elusloomade import | 0,0 | 0,0 | 0,1 | Imports of live animals |
| Liha import | 18,8 | 21,6 | 22,2 | Imports of meat |
| Ressurss ja kasutamine | 33,7 | 37,6 | 39,7 | Total resources and use |
| Elusloomade eksport | 0,0 | 0,0 | 0,0 | Exports of live animals |
| Liha eksport | 5,4 | 7,1 | 10,9 | Exports of meat |
| Varude muutus | –0,3 | 0,7 | –0,7 | Change in stocks |
| Tarbimine kokku | 28,6 | 29,8 | 29,5 | Domestic use |
| kadu | 0,0 | 0,0 | 0,0 | losses |
| loomasöödana | 0,0 | 0,0 | 0,0 | animal feed |
| inimtarbimine | 28,6 | 29,8 | 29,5 | human consumption |
| tarbimine inimese kohta, kilogrammi ^c | 21,3 | 22,2 | 22,0 | human consumption per capita, kilograms ^c |

^a Tapakaalus.

^b Eesti territooriumil tapetud linnud pluss eluslindude eksport miinus eluslindude import.

^c Arvestuses on kasutatud aastakeskmist rahvaarvu.

^a In carcass weight.

^b As the sum of slaughtering in the territory of Estonia plus exports of live birds minus imports of live birds.

^c In calculations the mean annual population number has been used.

Muna ressurss ja kasutamine, 2009–2011^a*Supply balance sheet of eggs, 2009–2011^a*

(tuhat tonni – thousand tons)

| Näitaja | 01.01–31.12 | | | Indicator |
|--|-------------|-------------|-------------|--|
| | 2009 | 2010 | 2011 | |
| Toodang | 10,8 | 11,4 | 11,5 | Production |
| Import | 6,9 | 7,3 | 8,6 | Imports |
| Ressurss ja kasutamine | 17,7 | 18,7 | 20,1 | Total resources and use |
| Eksport | 1,6 | 1,9 | 3,0 | Exports |
| Varude muutus | 0,0 | 0,0 | 0,0 | Change in stocks |
| Tarbimine kokku | 16,1 | 16,8 | 17,1 | Domestic use total |
| tarbimine haudemunaks | 0,9 | 1,1 | 0,9 | eggs for hatching |
| kadu | 0,0 | 0,0 | 0,0 | losses |
| tarbimine loomasöödana | 0,0 | 0,0 | 0,0 | used as animal feed |
| tööstuslik tarbimine ^b | 0,0 | 0,0 | 0,0 | industrial use ^b |
| inimtarbimine | 15,2 | 15,7 | 16,2 | human consumption |
| tarbimine inimese kohta, kilogrammi ^c | 11,3 | 11,7 | 12,1 | human consumption per capita, kilograms ^c |
| tarbimine inimese kohta, tükki ^c | 181 | 187 | 193 | human consumption per capita, pieces ^c |

^a Ühe muna arvestuslik kaal on 62,5 grammi.^b V.a toidu ja loomasööda valmistamiseks.^c Arvestuses on kasutatud aastakeskmist rahvaarvu.^a Average egg weight is 62.5 grams.^b Except for the manufacture of food and animal feed.^c In calculations the mean annual population number has been used.

Kasutatav põllumajandusmaa, 2009–2011*Utilised agricultural land, 2009–2011*

(hektarit – hectares)

| Näitaja | 2009 | 2010 | 2011 | Indicator |
|---|---------|---------|---------|--|
| Kasutatav põllumajandusmaa kokku ^a | 931 776 | 948 826 | 945 992 | Utilised agricultural land total ^a |
| Põllumajandustootmises kasutatav maa | 799 902 | 839 386 | 802 206 | Area of agricultural production |
| koduaias oma tarbeks ^b | 11 197 | 9 602 | 9 602 | kitchen garden for own use ^b |
| Viljapu- ja marjaaed (v.a maasikas) | 7 678 | 6 504 | 6 442 | Fruit and berry plantations (excl. strawberries) |
| koduaias oma tarbeks ^b | 5 091 | 3 937 | 3 937 | kitchen garden for own use ^b |
| Puukool | 430 | 553 | 553 | Nurseries |
| Looduslik (püsi-) rohumaa ^c | 195 381 | 187 262 | 162 812 | Permanent grassland ^c |
| Põllumaa | 596 413 | 645 067 | 632 399 | Arable land |
| peale selle korduskülvid | 794 | - | - | plus double sowings |
| koduaias oma tarbeks ^b | 5 466 | 5 025 | 5 025 | kitchen garden for own use ^b |
| teravili | 316 412 | 275 295 | 296 949 | cereals |
| kaunvili | 4 913 | 7 326 | 8 550 | legumes (dried pulses) |
| tehnilised kultuurid | 83 425 | 99 335 | 89 957 | industrial crops |

^a Põllumajandustootmises kasutatav ja heades põllumajandus- ja keskkonnatingimustes säilitatav maa.

^b Põllumajandussaaduste kasvatamine põllumajanduslike majapidamiste koduaias (puu- ja köögiviljaaed) ja kodumajapidamistes oma tarbeks.

^c Alates 2003. aastast arvestatakse haritavale maale rajatud üle viie aasta vanune pikaajaline rohumaa loodusliku rohumaa hulka.

^a Area where agricultural products are produced and maintained in good agricultural and environmental condition.

^b Crop growing in kitchen gardens of agricultural holdings and in agricultural household plots for own use.

^c Since 2003 over five-year-old seeded grassland is considered permanent grassland.

Kasutatav põllumajandusmaa, 2009–2011*Utilised agricultural land, 2009–2011*

(hektarit – hectares)

Järg — Cont.

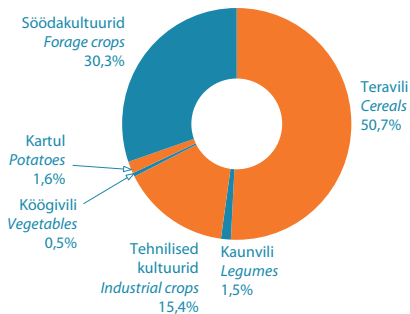
| Näitaja | 2009 | 2010 | 2011 | Indicator |
|---|---------|---------|---------|---|
| avamaaköögivili | 2 757 | 2 796 | 2 981 | open-field vegetables |
| koduaias oma tarbeks ^a | 1 289 | 1 191 | 1 191 | kitchen garden for own use ^a |
| köögiviljaseemne kasvatus | 1 | 5 | - | vegetables for seed |
| maasikas | 597 | 589 | 599 | strawberries |
| koduaias oma tarbeks ^a | 250 | 191 | 191 | kitchen garden for own use ^a |
| kartul | 9 103 | 9 359 | 9 235 | potatoes |
| koduaias oma tarbeks ^a | 3 526 | 3 253 | 3 253 | kitchen garden for own use ^a |
| söödajuurvili | 36 | 63 | 33 | fodder roots |
| söödajuurvilja-seemne kasvatus | - | - | - | fodder roots for seed |
| ühe- ja mitme-aastased sööda-kultuurid | 149 934 | 207 865 | 177 578 | annual and multi-annual forage crops |
| seemnekasvatus | 3 872 | 3 277 | 2 413 | seed |
| avamaalilled | 21 | 20 | 13 | open-field flowers |
| katmikala | 278 | 258 | 257 | greenhouse area |
| koduaias oma tarbeks ^a | 219 | 218 | 218 | kitchen garden for own use ^a |
| kesa, k.a haljas-väetistaimed | 29 730 | 42 156 | 46 247 | fallow, incl. green manures |
| Maa, mida ei kasutata põllumajandustootmises, kuid säilitatakse heades põllumajandus- ja keskkonnamitingimustes | 131 874 | 109 440 | 143 786 | Land not used for agricultural production but maintained in good agricultural and environmental condition |

^a Põllumajandussaaduste kasvatamine põllumajanduslike majapidamiste koduaias (puu- ja köögiviljakaed) ja kodumajapidamistes oma tarbeks.

^a Crop growing in kitchen gardens of agricultural holdings and in agricultural household plots for own use.

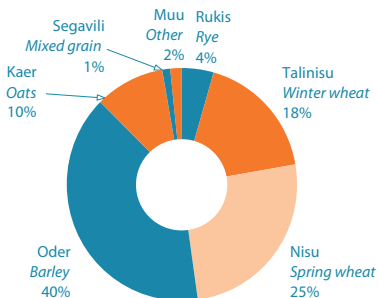
Põllukultuuride kasvupind, 2011

Sown area of field crops, 2011



Teravilja kasvupind, 2011

Sown area of cereals, 2011



Teravili, 2009–2011
Cereals, 2009–2011

| Näitaja | 2009 | 2010 | 2011 | Indicator |
|-------------------|---------|---------|---------|---------------------------------|
| Teravili kokku | | | | <i>Cereals total</i> |
| kasvupind, ha | 316 412 | 275 295 | 296 949 | <i>sown area, ha</i> |
| saak, t | 873 466 | 678 364 | 771 565 | <i>production, t</i> |
| saak, kg/ha | 2 761 | 2 464 | 2 598 | <i>production, kg/ha</i> |
| Rukis | | | | <i>Rye</i> |
| kasvupind, ha | 15 292 | 12 613 | 13 315 | <i>sown area, ha</i> |
| saak, t | 39 069 | 25 012 | 30 958 | <i>production, t</i> |
| saak, kg/ha | 2 555 | 1 983 | 2 325 | <i>production, kg/ha</i> |
| Tritik | | | | <i>Triticale</i> |
| kasvupind, ha | 7 963 | 4 020 | 4 457 | <i>sown area, ha</i> |
| saak, t | 22 571 | 8 979 | 13 593 | <i>production, t</i> |
| saak, kg/ha | 2 834 | 2 234 | 3 050 | <i>production, kg/ha</i> |
| Tali- ja suvinisu | | | | <i>Winter and spring wheat</i> |
| kasvupind, ha | 113 618 | 119 389 | 128 417 | <i>sown area, ha</i> |
| saak, t | 342 520 | 327 599 | 360 152 | <i>production, t</i> |
| saak, kg/ha | 3 015 | 2 744 | 2 805 | <i>production, kg/ha</i> |
| taliniisu | | | | <i>winter wheat</i> |
| kasvupind, ha | 44 983 | 50 622 | 52 771 | <i>sown area, ha</i> |
| saak, t | 144 659 | 148 539 | 158 990 | <i>production, t</i> |
| saak, kg/ha | 3 216 | 2 934 | 3 013 | <i>production, kg/ha</i> |
| suvinisu | | | | <i>spring wheat</i> |
| kasvupind, ha | 68 635 | 68 767 | 75 646 | <i>sown area, ha</i> |
| saak, t | 197 861 | 179 060 | 201 162 | <i>production, t</i> |
| saak, kg/ha | 2 883 | 2 604 | 2 659 | <i>production, kg/ha</i> |
| Tali- ja suvioder | | | | <i>Winter and spring barley</i> |
| kasvupind, ha | 140 676 | 104 818 | 118 309 | <i>sown area, ha</i> |
| saak, t | 376 945 | 254 809 | 295 048 | <i>production, t</i> |
| saak, kg/ha | 2 680 | 2 431 | 2 494 | <i>production, kg/ha</i> |

Teravili, 2009–2011

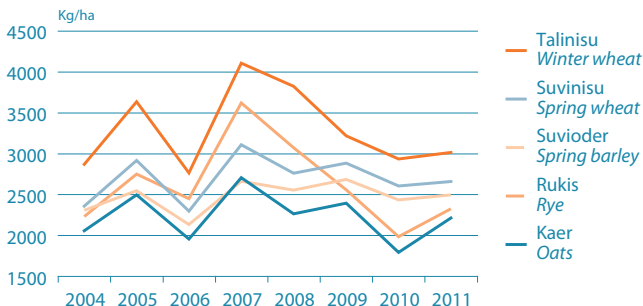
Cereals, 2009–2011

Järg — Cont.

| Näitaja | 2009 | 2010 | 2011 | Indicator |
|---------------|---------|---------|---------|-------------------|
| talioder | | | | winter barley |
| kasvupind, ha | 1 422 | 957 | 311 | sown area, ha |
| saak, t | 3 372 | 2 115 | 711 | production, t |
| saak, kg/ha | 2 371 | 2 210 | 2 286 | production, kg/ha |
| suvioder | | | | spring barley |
| kasvupind, ha | 139 254 | 103 861 | 117 998 | sown area, ha |
| saak, t | 373 573 | 252 694 | 294 337 | production, t |
| saak, kg/ha | 2 683 | 2 433 | 2 494 | production, kg/ha |
| Kaer | | | | Oats |
| kasvupind, ha | 36 134 | 30 431 | 28 393 | sown area, ha |
| saak, t | 86 504 | 54 472 | 62 769 | production, t |
| saak, kg/ha | 2 394 | 1 790 | 2 211 | production, kg/ha |
| Segavili | | | | Mixed grain |
| kasvupind, ha | 2 581 | 3 754 | 3 767 | sown area, ha |
| saak, t | 5 766 | 7 371 | 8 832 | production, t |
| saak, kg/ha | 2 234 | 1 964 | 2 345 | production, kg/ha |
| Tatar | | | | Buckwheat |
| kasvupind, ha | 148 | 270 | 291 | sown area, ha |
| saak, t | 91 | 122 | 213 | production, t |
| saak, kg/ha | 615 | 452 | 732 | production, kg/ha |

Teravilja saagikus, 2004–2011

Production of cereals, 2004–2011



Kaunvili, 2009–2011

Legumes (dried pulses), 2009–2011

| Näitaja | 2009 | 2010 | 2011 | Indicator |
|----------------|-------|--------|--------|------------------------------|
| Kaunvili kokku | | | | Legumes (dried pulses) total |
| kasvupind, ha | 4 913 | 7 326 | 8 550 | sown area, ha |
| saak, t | 7 600 | 12 553 | 15 482 | production, t |
| saak, kg/ha | 1 547 | 1 713 | 1 811 | production, kg/ha |
| Hernes | | | | Peas |
| kasvupind, ha | 4 830 | 6 860 | 8 457 | sown area, ha |
| saak, t | 7 470 | 12 076 | 15 402 | production, t |
| saak, kg/ha | 1 547 | 1 760 | 1 821 | production, kg/ha |

Tehnilised kultuurid, 2009–2011
Industrial crops, 2009–2011

| Näitaja | 2009 | 2010 | 2011 | Indicator |
|----------------------------|---------|---------|---------|---|
| Tehnilised kultuurid kokku | | | | <i>Industrial crops total</i> |
| kasvupind, ha | 83 425 | 99 335 | 89 957 | <i>sown area, ha</i> |
| Raps ja rüps | | | | <i>Winter and spring rape and turnip rape</i> |
| kasvupind, ha | 82 053 | 98 188 | 88 997 | <i>sown area, ha</i> |
| saak, t | 135 992 | 131 022 | 144 194 | <i>production, t</i> |
| saak, kg/ha | 1 657 | 1 334 | 1 620 | <i>production, kg/ha</i> |
| taliraps | | | | <i>winter rape</i> |
| kasvupind, ha | 5 708 | 12 342 | 11 103 | <i>sown area, ha</i> |
| saak, t | 9 468 | 21 681 | 19 800 | <i>production, t</i> |
| saak, kg/ha | 1 659 | 1 757 | 1 783 | <i>production, kg/ha</i> |
| suviraps ja rüps | | | | <i>spring rape and turnip rape</i> |
| kasvupind, ha | 76 345 | 85 846 | 77 894 | <i>sown area, ha</i> |
| saak, t | 126 524 | 109 341 | 124 394 | <i>production, t</i> |
| saak, kg/ha | 1 657 | 1 274 | 1 597 | <i>production, kg/ha</i> |
| Õililina | | | | <i>Oil flax</i> |
| kasvupind, ha | 236 | 173 | 115 | <i>sown area, ha</i> |
| saak, t | 175 | 157 | 101 | <i>production, t</i> |
| saak, kg/ha | 742 | 908 | 878 | <i>production, kg/ha</i> |
| Kiulina | | | | <i>Fibre flax</i> |
| kasvupind, ha | - | - | - | <i>sown area, ha</i> |
| saak, t | - | - | - | <i>production, t</i> |
| saak, kg/ha | - | - | - | <i>production, kg/ha</i> |
| Muud tehnilised kultuurid | | | | <i>Other industrial crops</i> |
| kasvupind, ha | 1 136 | 974 | 845 | <i>sown area, ha</i> |

Kartul ja köögivili, 2009–2011
Potatoes and vegetables, 2009–2011

| Näitaja | 2009 | 2010 | 2011 | Indicator |
|-----------------|---------|---------|---------|-----------------------|
| Kartul | | | | Potatoes |
| kasvupind, ha | 9 103 | 9 359 | 9 235 | sown area, ha |
| saak, t | 139 050 | 163 373 | 164 716 | production, t |
| saak, kg/ha | 15 275 | 17 456 | 17 836 | production, kg/ha |
| Köögivili kokku | | | | Vegetables total |
| saak, t | 70 624 | 73 889 | 88 125 | production, t |
| Avamaaköögivili | | | | Open field vegetables |
| kasvupind, ha | 2 757 | 2 796 | 2 981 | sown area, ha |
| saak, t | 59 127 | 59 180 | 74 122 | production, t |
| saak, kg/ha | 21 446 | 21 166 | 24 865 | production, kg/ha |
| kapsas | | | | cabbages |
| kasvupind, ha | 637 | 679 | 599 | sown area, ha |
| saak, t | 18 770 | 16 635 | 20 987 | production, t |
| saak, kg/ha | 29 466 | 24 499 | 35 037 | production, kg/ha |
| lillkapsas | | | | cauliflowers |
| kasvupind, ha | 17 | 47 | 41 | sown area, ha |
| saak, t | 155 | 355 | 339 | production, t |
| saak, kg/ha | 9 118 | 7 553 | 8 268 | production, kg/ha |
| kurk | | | | cucumbers |
| kasvupind, ha | 184 | 220 | 228 | sown area, ha |
| saak, t | 3 690 | 5 047 | 5 138 | production, t |
| saak, kg/ha | 20 054 | 22 941 | 22 535 | production, kg/ha |
| tomat | | | | tomatoes |
| kasvupind, ha | 15 | 16 | 14 | sown area, ha |
| saak, t | 150 | 222 | 196 | production, t |
| saak, kg/ha | 10 000 | 13 875 | 14 000 | production, kg/ha |

Kartul ja köögivil, 2009–2011

Potatoes and vegetables, 2009–2011

Järg — Cont.

| Näitaja | 2009 | 2010 | 2011 | Indicator |
|-----------------|--------|--------|--------|-----------------------------|
| söögipeet | | | | red beets |
| kasvupind, ha | 318 | 311 | 390 | sown area, ha |
| saak, t | 7 158 | 5 835 | 9 458 | production, t |
| saak, kg/ha | 22 509 | 18 762 | 24 251 | production, kg/ha |
| porgand | | | | carrots |
| kasvupind, ha | 647 | 588 | 622 | sown area, ha |
| saak, t | 20 885 | 22 817 | 24 517 | production, t |
| saak, kg/ha | 32 280 | 38 804 | 39 416 | production, kg/ha |
| mulgulisibul | | | | onions |
| kasvupind, ha | 232 | 238 | 230 | sown area, ha |
| saak, t | 1 914 | 2 155 | 1 301 | production, t |
| saak, kg/ha | 8 250 | 9 055 | 5 657 | production, kg/ha |
| küüslauk | | | | garlic |
| kasvupind, ha | 66 | 70 | 75 | sown area, ha |
| saak, t | 74 | 110 | 167 | production, t |
| saak, kg/ha | 1 121 | 1 571 | 2 227 | production, kg/ha |
| roheline hernes | | | | green peas |
| kasvupind, ha | 121 | 133 | 102 | sown area, ha |
| saak, t | 158 | 91 | 91 | production, t |
| saak, kg/ha | 1 306 | 684 | 892 | production, kg/ha |
| kaalikas | | | | swedes |
| kasvupind, ha | 140 | 155 | 136 | sown area, ha |
| saak, t | 2 493 | 1 161 | 1 818 | production, t |
| saak, kg/ha | 17 807 | 7 490 | 13 368 | production, kg/ha |
| muu köögivil | | | | other vegetables and greens |
| kasvupind, ha | 397 | 386 | 585 | sown area, ha |
| saak, t | 3 835 | 5 107 | 10 449 | production, t |
| saak, kg/ha | 9 660 | 13 231 | 17 862 | production, kg/ha |

Katmikala kasutamine, 2009–2011*Use of greenhouse area, 2009–2011*

| Näitaja | 2009 | 2010 | 2011 | Indicator |
|-----------------------|--------|---------|--------|--|
| Katmikköögivili kokku | | | | Greenhouse vegetables and greens total |
| kasvupind, ha | 267,8 | 247,6 | 250,4 | sown area, ha |
| saak, t | 11 497 | 14 709 | 14 003 | production, t |
| saak, kg/ha | 42 931 | 59 406 | 55 923 | production, kg/ha |
| Kurk | | | | Cucumbers |
| kasvupind, ha | 86,3 | 70,1 | 70,0 | sown area, ha |
| saak, t | 5 687 | 7 063 | 5 936 | production, t |
| saak, kg/ha | 65 898 | 100 756 | 84 800 | production, kg/ha |
| Tomat | | | | Tomatoes |
| kasvupind, ha | 158,6 | 152,4 | 153,2 | sown area, ha |
| saak, t | 4 549 | 4 962 | 6 218 | production, t |
| saak, kg/ha | 28 682 | 32 559 | 40 587 | production, kg/ha |
| Muu köögivili | | | | Other vegetables and greens |
| kasvupind, ha | 22,0 | 24,0 | 24,9 | sown area, ha |
| saak, t | 1 261 | 2 684 | 1 849 | production, t |
| saak, kg/ha | 57 318 | 111 833 | 74 257 | production, kg/ha |
| Lilled kokku | | | | Flowers total |
| kasvupind, ha | 10,0 | 9,5 | 7,0 | sown area, ha |

Söödajuurvili ja üheaastased söödakultuurid, 2009–2011*Fodder roots and annual forage crops, 2009–2011*

| Näitaja | 2009 | 2010 | 2011 | Indicator |
|--|--------|--------|---------|--|
| Söödajuurvili | | | | <i>Fodder roots</i> |
| kasvupind, ha | 36 | 63 | 33 | <i>sown area, ha</i> |
| saak, t | 717 | 344 | 460 | <i>production, t</i> |
| saak, kg/ha | 19 917 | 5 460 | 13 939 | <i>production, kg/ha</i> |
| Üheaastased söödakultuurid (söödakapsas, mais, tera- ja kaunvili haljassöödaks jm) | | | | <i>Annual forage crops (kale, maize, cereals and legumes for green forage, etc.)</i> |
| kasvupind, ha | 6 429 | 5 347 | 5 738 | <i>sown area, ha</i> |
| saak haljasmassi-kaalus, t | 81 134 | 75 032 | 100 287 | <i>production, green fodder weight, t</i> |
| saak, kg/ha | 12 620 | 14 033 | 17 478 | <i>production, kg/ha</i> |
| mais | | | | <i>maize</i> |
| kasvupind, ha | 1 773 | 1 657 | 2 147 | <i>sown area, ha</i> |
| saak haljasmassi-kaalus, t | 38 685 | 33 768 | 68 587 | <i>production, green fodder weight, t</i> |
| saak, kg/ha | 21 819 | 20 379 | 31 946 | <i>production, kg/ha</i> |

Mitmeaastased söodakultuurid, 2009–2011*Multiannual forage crops, 2009–2011*

| Näitaja | 2009 | 2010 | 2011 | Indicator |
|------------------------------------|-----------|-----------|-----------|---|
| Mitmeaastased söodakultuurid kokku | | | | <i>Multiannual forage crops total</i> |
| kasvupind, ha | 139 633 | 199 241 | 169 427 | <i>sown area, ha</i> |
| saak haljasmassi-kaalus, t | 1 836 072 | 2 263 487 | 2 051 728 | <i>production, green fodder weight, t</i> |
| saak, kg/ha | 13 149 | 11 361 | 12 110 | <i>production, kg/ha</i> |
| peale selle kattevilja allakülv | | | | <i>plus covered sowings</i> |
| kasvupind, ha | 12 850 | 9 651 | 8 340 | <i>sown area, ha</i> |
| Ristik | | | | <i>Clover</i> |
| kasvupind, ha | 42 537 | 49 478 | 40 539 | <i>sown area, ha</i> |
| saak haljasmassi-kaalus, t | 582 956 | 607 127 | 527 381 | <i>production, green fodder weight, t</i> |
| saak, kg/ha | 13 705 | 12 271 | 13 009 | <i>production, kg/ha</i> |
| Lutsern | | | | <i>Lucerne</i> |
| kasvupind, ha | 10 729 | 11 021 | 6 047 | <i>sown area, ha</i> |
| saak haljasmassi-kaalus, t | 142 084 | 128 225 | 85 474 | <i>production, green fodder weight, t</i> |
| saak, kg/ha | 13 243 | 11 635 | 14 135 | <i>production, kg/ha</i> |
| Muud libliköielised | | | | <i>Other legumes</i> |
| kasvupind, ha | 24 885 | 16 392 | 62 843 | <i>sown area, ha</i> |
| saak haljasmassi-kaalus, t | 329 863 | 173 397 | 724 452 | <i>production, green fodder weight, t</i> |
| saak, kg/ha | 13 255 | 10 578 | 11 528 | <i>production, kg/ha</i> |
| Muu lühiajaline rohumaa | | | | <i>Other temporary grassland</i> |
| kasvupind, ha | 61 482 | 122 350 | 59 998 | <i>sown area, ha</i> |
| saak haljasmassi-kaalus, t | 781 169 | 1 354 738 | 714 421 | <i>production, green fodder weight, t</i> |
| saak, kg/ha | 12 706 | 11 073 | 11 907 | <i>production, kg/ha</i> |

Ühe- ja mitmeaastaste söodakultuuride haljasmassisaak, 2009–2011

Green fodder from annual and multiannual forage crops, 2009–2011

| Näitaja | 2009 | 2010 | 2011 | Indicator |
|---------------------------|-----------|-----------|-----------|------------------------------------|
| Kasvupind, ha | 146 062 | 204 588 | 175 165 | Sown area, ha |
| Saak haljasmassikaalus, t | 1 917 206 | 2 338 519 | 2 152 015 | Production, green fodder weight, t |
| Saak, kg/ha | 13 126 | 11 430 | 12 286 | Production, kg/ha |

Söodakultuuride seemnete kasvatamine, 2009–2011

Forage crops for seed, 2009–2011

| Näitaja | 2009 | 2010 | 2011 | Indicator |
|------------------------------------|-------|-------|-------|--|
| Ristik, lutsern ja muud heintaimed | | | | Clover, lucerne and other grass plants |
| kasvupind, ha | 3 872 | 3 277 | 2 413 | sown area, ha |
| saak, t | 189 | 515 | 372 | production, t |
| saak, kg/ha | 49 | 157 | 154 | production, kg/ha |
| peale selle kattevilja allakülv | | | | plus covered sowings |
| kasvupind, ha | ... | ... | ... | sown area, ha |
| Söödajuurvili | | | | Fodder roots |
| kasvupind, ha | - | - | - | sown area, ha |

Looduslik (püsi)rohumaa, 2009–2011*Permanent grassland, 2009–2011*

| Näitaja | 2009 | 2010 | 2011 | Indicator |
|--|-----------|-----------|-----------|---|
| Looduslik (püsi-) rohumaa (k.a pikaajaline rohumaa) kokku ^a | | | | <i>Permanent grassland total (incl. seeded grassland)^a</i> |
| kasvupind, ha | 195 381 | 187 262 | 162 812 | <i>area, ha</i> |
| saak haljasmassi-kaalus, t | 1 705 062 | 1 707 995 | 1 491 651 | <i>production, green fodder weight, t</i> |
| saak, kg/ha | 8 727 | 9 121 | 9 162 | <i>production, kg/ha</i> |
| pikaajaline rohumaa (haritavale maale rajatud üle 5-aastane rohumaa) | | | | <i>seeded grassland (occupying the soil over 5 years)</i> |
| kasvupind, ha | 124 311 | 107 443 | 111 135 | <i>area, ha</i> |
| saak haljasmassikaalus, t | 1 157 120 | 1 079 483 | 1 120 280 | <i>production, green fodder weight, t</i> |
| saak, kg/ha | 9 308 | 10 047 | 10 080 | <i>production, kg/ha</i> |

^a Alates 2003. aastast arvestatakse haritavale maale rajatud üle viie aasta vanune pikaajaline rohumaa loodusliku rohumaa hulka.

^a Since 2003 over five-year-old seeded grassland is considered permanent grassland.

Maasikakasvatus, 2009–2011*Strawberries, 2009–2011*

| Näitaja | 2009 | 2010 | 2011 | Indicator |
|--|-------|-------|-------|---|
| Kasvupind, ha | 597 | 589 | 599 | <i>Planted area, ha</i> |
| Saak, t | 1 790 | 1 275 | 1 292 | <i>Production, t</i> |
| Saak, kg kande-ealise istandiku ha kohta | 3 163 | 2 245 | 2 456 | <i>Production, kg per plantation ha of carrying age</i> |

Viljapuu- ja marjaaiad (v.a maasikakasvatus), 2009–2011*Fruit and berry plantations (excl. strawberries), 2009–2011*

| Näitaja | 2009 | 2010 | 2011 | Indicator |
|--------------------------------|-------|-------|-------|--|
| Viljapuu- ja marjaaiad | | | | <i>Fruit and berry plantations</i> |
| kasvupind, ha | 7 678 | 6 504 | 6 442 | <i>planted area, ha</i> |
| saak, t | 7 983 | 3 796 | 4 542 | <i>production, t</i> |
| saak, kg | 1 134 | 625 | 748 | <i>production, kg</i> |
| kandeealise istandiku ha kohta | | | | <i>per plantation ha of carrying age</i> |
| õunad ja pirnid | | | | <i>apples and pears</i> |
| kasvupind, ha | 4 222 | 3 319 | 3 329 | <i>planted area, ha</i> |
| saak, t | 5 446 | 1 983 | 2 702 | <i>production, t</i> |
| saak, kg | 1 333 | 615 | 840 | <i>production, kg</i> |
| kandeealise istandiku ha kohta | | | | <i>per plantation ha of carrying age</i> |
| ploomid | | | | <i>plums</i> |
| kasvupind, ha | 540 | 449 | 441 | <i>planted area, ha</i> |
| saak, t | 686 | 251 | 266 | <i>production, t</i> |
| saak, kg | 1 309 | 577 | 617 | <i>production, kg</i> |
| kandeealise istandiku ha kohta | | | | <i>per plantation ha of carrying age</i> |
| kirsid | | | | <i>cherries</i> |
| kasvupind, ha | 338 | 276 | 275 | <i>planted area, ha</i> |
| saak, t | 108 | 126 | 105 | <i>production, t</i> |
| saak, kg | 322 | 458 | 395 | <i>production, kg</i> |
| kandeealise istandiku ha kohta | | | | <i>per plantation ha of carrying age</i> |

Viljapuu- ja marjaaiad (v.a maasikakasvatus), 2009–2011
Fruit and berry plantations (excl. strawberries), 2009–2011
Järg — Cont.

| Näitaja | 2009 | 2010 | 2011 | Indicator |
|--|-------|-------|------|---|
| punane ja valge sõstar | | | | <i>red and white currants</i> |
| kasvupind, ha | 402 | 384 | 347 | <i>planted area, ha</i> |
| saak, t | 511 | 134 | 291 | <i>production, t</i> |
| saak, kg kandeealise istandiku ha kohta | 1 274 | 350 | 839 | <i>production, kg per plantation ha of carrying age</i> |
| must sõstar | | | | <i>black currants</i> |
| kasvupind, ha | 558 | 596 | 560 | <i>planted area, ha</i> |
| saak, t | 401 | 402 | 489 | <i>production, t</i> |
| saak, kg kandeealise istandiku ha kohta | 830 | 749 | 935 | <i>production, kg per plantation ha of carrying age</i> |
| karusmari | | | | <i>gooseberries</i> |
| kasvupind, ha | 231 | 183 | 183 | <i>planted area, ha</i> |
| saak, t | 117 | 147 | 141 | <i>production, t</i> |
| saak, kg kandeealise istandiku ha kohta | 506 | 803 | 770 | <i>production, kg per plantation ha of carrying age</i> |
| vaarikas | | | | <i>raspberries</i> |
| kasvupind, ha | 219 | 266 | 245 | <i>planted area, ha</i> |
| saak, t | 213 | 282 | 160 | <i>production, t</i> |
| saak, kg kandeealise istandiku ha kohta | 1 014 | 1 085 | 708 | <i>production, kg per plantation ha of carrying age</i> |

Viljapuu- ja marjaaiad (v.a maasikakasvatus), 2009–2011

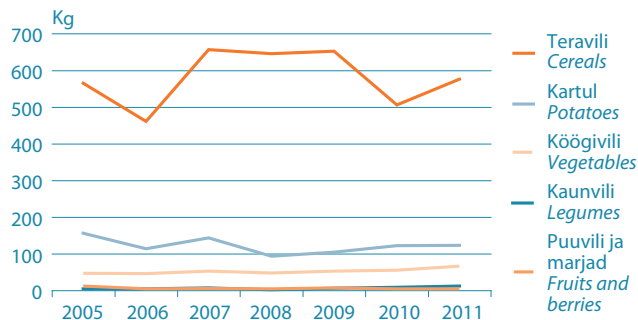
Fruit and berry plantations (excl. strawberries), 2009–2011

Järg — Cont.

| Näitaja | 2009 | 2010 | 2011 | Indicator |
|-----------------------------|-------|-------|-------|---|
| muud | | | | other |
| kasvupind, ha | 1 168 | 1 031 | 1 062 | planted area, ha |
| saak, t | 501 | 471 | 388 | production, t |
| saak, kg | 651 | 609 | 441 | production, kg |
| kandeealise istandiku ha | | | | per plantation ha of carrying age |

Taimekasvatussaaduste tootmine elaniku kohta, 2005–2011

Production of field crops per capita, 2005–2011



Taimakasvatussaaduste tootmine elaniku kohta, 2009–2011*Crop production per capita, 2009–2011**(kilogrammi – kilograms)*

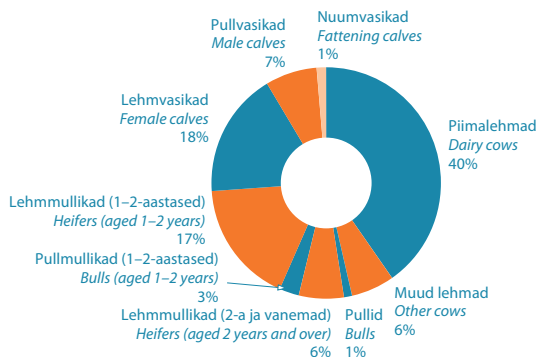
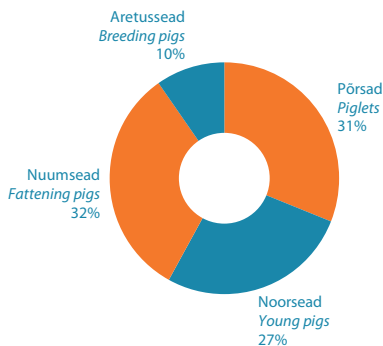
| Näitaja | 2009 | 2010 | 2011 | Indicator |
|-------------------|------|------|------|---------------------------|
| Teravili | 652 | 506 | 576 | Grain |
| Kaunvili | 6 | 9 | 12 | Legumes (dried pulses) |
| Kartul | 104 | 122 | 123 | Potatoes |
| Köögivil | 53 | 55 | 66 | Vegetables |
| Puuvili ja marjad | 7 | 4 | 4 | Fruits and berries |

Mineraalväetiste ja orgaanilise väetise kasutamine põllumajanduskultuuride kasvupindadel (aruandeaasta saak), 2009–2011*Use of mineral fertilizers and organic fertilizers for agricultural crops
(production of the reference year), 2009–2011*

| Näitaja | 2009 | 2010 | 2011 | Indicator |
|---------------------------------------|-----------|-----------|-----------|--|
| Mineraalväetised kokku, toimeainet, t | 41 398 | 44 111 | 45 228 | Mineral fertilizers total, active substance, t |
| lämmastik (N) | 27 328 | 28 628 | 29 803 | nitrogen (N) |
| fosfor (P_2O_5) | 5 660 | 6 117 | 6 139 | phosphorus (P_2O_5) |
| kaalium (K_2O) | 8 410 | 9 366 | 9 286 | potassium (K_2O) |
| väetatud pind, ha | 360 783 | 351 402 | 378 065 | fertilized area, ha |
| kasutatud väetatud pinnal, kg/ha | 115 | 126 | 120 | used on fertilized area, kg/ha |
| Orgaaniline väetis, t | 2 309 899 | 2 615 207 | 2 781 965 | Organic fertilizers, t |
| väetatud pind, ha | 71 268 | 85 900 | 96 037 | fertilized area, ha |
| kasutatud väetatud pinnal, t/ha | 32 | 30 | 29 | used on fertilized area, t/ha |
| Põldude lupjamine, t | 6 069 | 47 945 | 28 783 | Liming, t |
| lubjatud pind, ha | 6 420 | 17 769 | 13 419 | limed area, ha |
| kasutatud lubjatud pinnal, kg/ha | 945 | 2 698 | 2 145 | used on limed area, kg/ha |

Veised, 31. detsember, 2009–2011*Cattle, 31 December, 2009–2011**(tuhat – thousands)*

| Näitaja | 2009 | 2010 | 2011 | Indicator |
|--|-------|-------|-------|---|
| KOKKU | 234,7 | 236,3 | 238,3 | TOTAL |
| Lehmad, pullid ja lehmmullikad (2-aastased ja vanemad) | 123,3 | 125,9 | 128,4 | Cows, bulls and heifers (aged 2 years and over) |
| piimalehmad | 96,7 | 96,5 | 96,2 | dairy cows |
| muud lehmad | 10,3 | 12,1 | 14,5 | other cows |
| pullid | 2,0 | 2,3 | 2,4 | bulls |
| lehmmullikad | 14,3 | 15,0 | 15,3 | heifers |
| nuumale | 1,0 | 1,0 | 1,2 | for slaughter |
| üleskasvatamiseks | 13,3 | 14,0 | 14,1 | for breeding |
| Mullikad (1–2-aastased) | 47,9 | 47,7 | 47,3 | Bovine animals (aged 1–2 years) |
| pullmullikad | 8,3 | 8,1 | 6,5 | bulls |
| lehmmullikad | 39,6 | 39,6 | 40,8 | heifers |
| nuumale (tapaks) | 1,4 | 1,4 | 1,4 | for slaughter |
| üleskasvatamiseks | 38,2 | 38,2 | 39,4 | for breeding |
| Vasikad (kuni 1-aastased) | 63,5 | 62,7 | 62,6 | Calves (aged less than 1 year) |
| nuumale (tapaks) | 3,2 | 3,1 | 3,2 | for slaughter |
| üleskasvatamiseks | 60,3 | 59,6 | 59,4 | for breeding |
| lehmvasikad | 40,4 | 41,7 | 42,1 | females |
| pullvasikad | 19,9 | 17,9 | 17,3 | males |

Veised, 31. detsember 2011
Cattle, 31 December 2011

Sead, 31. detsember 2011
Pigs, 31 December 2011


Sead, 31. detsember, 2009–2011*Pigs, 31 December, 2009–2011**(tuhat – thousands)*

| Näitaja | 2009 | 2010 | 2011 | Indicator |
|---|-------|-------|-------|--|
| KOKKU | 365,1 | 371,7 | 365,7 | TOTAL |
| Pörsad, eluskaaluga alla 20 kg | 120,7 | 116,1 | 113,9 | Piglets, live weight less than 20 kg |
| Noorsead, eluskaaluga 20–<50 kg | 94,6 | 100,2 | 98,4 | Young pigs, live weight 20–<50 kg |
| Nuumsead | 115,2 | 119,7 | 117,2 | Fattening pigs |
| eluskaaluga 50–<80 kg | 68,4 | 73,7 | 72,6 | live weight 50–<80 kg |
| eluskaaluga 80–<110 kg | 36,7 | 44,5 | 42,2 | live weight 80–<110 kg |
| eluskaaluga 110 kg või rohkem | 10,1 | 1,5 | 2,4 | live weight 110 kg or more |
| Aretussead (sugusead), eluskaaluga vähemalt 50 kg | 34,6 | 35,7 | 36,2 | Breeding pigs, live weight 50 kg or more |
| kuldid | 0,5 | 0,6 | 0,6 | boars |
| emised | 34,1 | 35,1 | 35,6 | sows |
| paaritatud | 24,1 | 27,0 | 27,6 | covered |
| esimest korda paaritatud | 4,7 | 4,9 | 5,8 | covered for the first time |
| muud emised | 10,0 | 8,1 | 8,0 | other sows |
| paaritamata nooremised | 3,5 | 4,0 | 4,3 | gilts not yet covered |

Lambad, kitsed, hobused ja mesilaspered, 31. detsember, 2009–2011*Sheep, goats, horses and colonies of bees, 31 December 2009–2011**(tuhat – thousands)*

| Näitaja | 2009 | 2010 | 2011 | Indicator |
|--------------|------|------|------|------------------|
| Lambad | 76,5 | 78,6 | 83,9 | Sheep |
| uted | 55,1 | 58,5 | 62,6 | ewes |
| Kitsed | 3,9 | 4,1 | 4,3 | Goats |
| emakitsed | 2,6 | 2,7 | 2,8 | female goats |
| Hobused | 5,4 | 6,8 | 6,5 | Horses |
| Mesilaspered | 27,5 | 28,3 | 26,4 | Colonies of bees |

Linnud, 31. detsember, 2009–2011*Poultry, 31 December 2009–2011**(tuhat – thousands)*

| Näitaja | 2009 | 2010 | 2011 | Indicator |
|----------------|---------|---------|---------|----------------|
| KOKKU | 1 792,2 | 2 046,4 | 2 032,9 | TOTAL |
| Kanad ja kuked | 1 748,3 | 1 997,6 | 1 973,3 | Hens and cocks |
| munejad kanad | ... | ... | ... | laying hens |
| Muud linnud | 43,9 | 48,8 | 59,6 | Other poultry |

Veiste arvu muutus aasta jooksul, 2009–2011*Changes in the number of cattle during the year, 2009–2011**(tuhat – thousands)*

| Näitaja | 2009 | 2010 | 2011 | Indicator |
|--------------------|-------|-------|-------|------------------------------|
| Aasta algul | 237,9 | 234,7 | 236,3 | At the beginning of the year |
| juurdesünd | 106,3 | 102,4 | 107,9 | births |
| ost | 22,8 | 24,9 | 26,8 | purchases |
| import | 0,0 | 0,2 | 0,3 | imports |
| tapaks | 66,8 | 58,3 | 57,1 | for slaughter |
| eksport | 1,0 | 3,1 | 4,8 | exports |
| müük | 48,7 | 55,0 | 60,6 | sale for breeding |
| kasvatamiseks | | | | |
| eksport | 25,9 | 30,3 | 34,2 | exports |
| lõpnud ja hukkunud | 16,8 | 12,4 | 15,0 | dead and perished |
| Aasta lõpus | 234,7 | 236,3 | 238,3 | At the end of the year |

Piimalehmade arvu muutus aasta jooksul, 2009–2011*Changes in the number of dairy cows during the year, 2009–2011**(tuhat – thousands)*

| Näitaja | 2009 | 2010 | 2011 | Indicator |
|--------------------|-------|------|------|------------------------------|
| Aasta algul | 100,4 | 96,7 | 96,5 | At the beginning of the year |
| poeginud mullikad | 30,8 | 30,3 | 29,4 | calved heifers |
| ost | 4,4 | 6,8 | 7,4 | purchases |
| tapaks | 27,6 | 24,1 | 24,1 | for slaughter |
| müük kasvatamiseks | 4,5 | 6,9 | 7,4 | sale for breeding |
| lõpnud ja hukkunud | 6,4 | 6,0 | 5,2 | dead and perished |
| pandud nuumale | 0,4 | 0,3 | 0,4 | for fattening |
| Aasta lõpus | 96,7 | 96,5 | 96,2 | At the end of the year |

Sigade arvu muutus aasta jooksul, 2009–2011*Changes in the number of pigs during the year, 2009–2011**(tuhat – thousands)*

| Näitaja | 2009 | 2010 | 2011 | Indicator |
|--------------------|-------|-------|-------|------------------------------|
| Aasta algul | 364,9 | 365,1 | 371,7 | At the beginning of the year |
| juurdesünd | 724,1 | 751,8 | 781,7 | births |
| ost | 280,9 | 221,0 | 243,0 | purchases |
| import | 0,1 | 0,1 | 0,0 | imports |
| tapaks | 597,3 | 604,1 | 658,0 | for slaughter |
| eksport | 169,4 | 153,5 | 212,3 | exports |
| müük kasvatamiseks | 280,8 | 220,9 | 243,0 | sale for breeding |
| eksport | 0,0 | 0,0 | 0,0 | exports |
| lõpnud ja hukkunud | 126,7 | 141,2 | 129,7 | dead and perished |
| Aasta lõpus | 365,1 | 371,7 | 365,7 | At the end of the year |

Lammaste ja kitsede arvu muutus aasta jooksul, 2009–2011*Changes in the number of sheep and goats during the year, 2009–2011**(tuhat – thousands)*

| Näitaja | 2009 | 2010 | 2011 | Indicator |
|--------------------|------|------|------|------------------------------|
| Aasta algul | 81,8 | 80,4 | 82,7 | At the beginning of the year |
| juurdesünd | 47,1 | 45,6 | 47,2 | births |
| ost | 12,3 | 17,4 | 15,0 | purchases |
| import | 0,0 | 0,0 | 0,0 | imports |
| tapaks | 40,9 | 36,0 | 33,4 | for slaughter |
| eksport | 0,0 | 0,0 | 2,5 | exports |
| müük kasvatamiseks | 12,3 | 17,4 | 15,0 | sale for breeding |
| eksport | 0,0 | 0,0 | 0,0 | exports |
| lõpnud ja hukkunud | 7,6 | 7,3 | 8,3 | dead and perished |
| Aasta lõpus | 80,4 | 82,7 | 88,2 | At the end of the year |

Lindude arvu muutus aasta jooksul, 2009–2011*Changes in the number of poultry during the year, 2009–2011**(tuhat – thousands)*

| Näitaja | 2009 | 2010 | 2011 | Indicator |
|--------------------|---------|---------|----------|------------------------------|
| Aasta algul | 1 757,3 | 1 792,2 | 2 046,4 | At the beginning of the year |
| juurdesünd | 9 044,1 | 9 672,8 | 9 623,9 | births |
| ost | 776,6 | 1 593,8 | 1 803,1 | purchases |
| import | 404,5 | 1 116,4 | 1 645,8 | imports |
| tapaks | 8 831,5 | 9 755,1 | 10 492,4 | for slaughter |
| müük kasvatamiseks | 372,1 | 477,4 | 157,3 | sale for breeding |
| lõpnud ja hukkunud | 582,2 | 779,9 | 790,8 | dead and perished |
| Aasta lõpus | 1 792,2 | 2 046,4 | 2 032,9 | At the end of the year |

Lihatoodang, 2009–2011*Production of meat, 2009–2011*

(tonni – tons)

| Näitaja | 2009 | 2010 | 2011 | Indicator |
|---------------------|--------|--------|--------|-----------------------------|
| Lihatoodang | 75 988 | 75 410 | 80 603 | <i>Production of meat</i> |
| veiseliha | 14 172 | 12 926 | 12 187 | <i>beef</i> |
| sealiha | 46 118 | 45 783 | 50 226 | <i>pork</i> |
| lamba- ja kitseliha | 778 | 666 | 620 | <i>mutton and goat meat</i> |
| linnuliha | 14 882 | 15 997 | 17 532 | <i>poultry meat</i> |
| muu liha | 38 | 38 | 38 | <i>other meat</i> |

Piimatoodang, 2009–2011*Production of milk, 2009–2011*

| Näitaja | 2009 | 2010 | 2011 | Indicator |
|-------------------------------|---------|---------|---------|--------------------------------------|
| Piimatoodang, t | 671 031 | 675 970 | 692 987 | <i>Production of milk, t</i> |
| lehmapiim | 670 554 | 675 344 | 692 387 | <i>cow milk</i> |
| keskmiselt lehma kohta, kg | 6 838 | 7 021 | 7 168 | <i>average yield per cow, kg</i> |
| kitsepiim | 477 | 626 | 600 | <i>goat milk</i> |

Munatoodang, 2009–2011*Production of eggs, 2009–2011*

| Näitaja | 2009 | 2010 | 2011 | Indicator |
|------------------------------|---------|---------|---------|--|
| Munatoodang, tuhat tk | 173 264 | 181 861 | 183 831 | <i>Production of eggs, thousand pcs.</i> |
| kanamunad | 168 335 | 176 163 | 176 877 | <i>hen eggs</i> |
| keskmiselt kana kohta, tk | 263 | 261 | 268 | <i>average yield per hen, pcs.</i> |

Villa- ja meetoodang, 2009–2011*Production of wool and honey, 2009–2011*

| Näitaja | 2009 | 2010 | 2011 | Indicator |
|-------------------------------------|------|------|------|--|
| Villatoodang, t | 134 | 154 | 126 | <i>Production of wool, t</i> |
| keskmiselt villa lamba kohta, kg | 1,7 | 2,0 | 1,5 | <i>average yield per sheep, kg</i> |
| Meetoodang, t | 575 | 681 | 694 | <i>Production of honey, t</i> |
| Vaha, t | 21 | 29 | 28 | <i>Beeswax, t</i> |

Tapaloomade ja -lindude eluskaal, 2009–2011*Live weight of livestock and poultry for slaughter, 2009–2011*

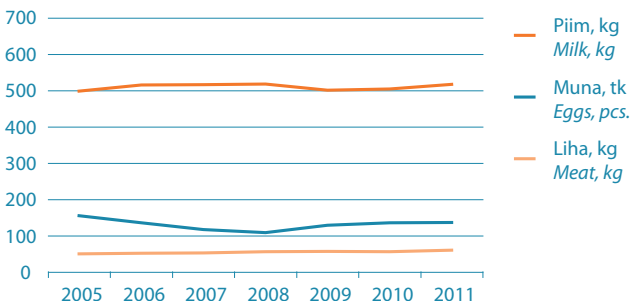
(tonni – tons)

| Näitaja | 2009 | 2010 | 2011 | Indicator |
|------------------|---------|---------|---------|-----------------|
| KOKKU | 113 190 | 111 669 | 118 473 | TOTAL |
| Veised | 26 791 | 24 435 | 23 038 | Cattle |
| Sead | 64 141 | 63 676 | 69 857 | Pigs |
| Lambad ja kitsed | 1 655 | 1 417 | 1 320 | Sheep and goats |
| Linnud | 20 528 | 22 065 | 24 182 | Poultry |
| Muud | 75 | 76 | 76 | Other |

Ühe tapalooma keskmine eluskaal, 2009–2011*Average live weight of an animal for slaughter, 2009–2011*

(kilogrammi – kilograms)

| Näitaja | 2009 | 2010 | 2011 | Indicator |
|------------------|------|------|------|-----------------|
| Veised | 401 | 419 | 391 | Cattle |
| Sead | 107 | 105 | 106 | Pigs |
| Lambad ja kitsed | 40 | 39 | 40 | Sheep and goats |
| Linnud | 2,3 | 2,3 | 2,3 | Poultry |

Loomakasvatussaaduste tootmine elaniku kohta, 2005–2011*Livestock production per capita, 2005–2011*

Loomakasvatussaaduste tootmine elaniku kohta, 2009–2011*Livestock production per capita, 2009–2011*

| Näitaja | 2009 | 2010 | 2011 | Indicator |
|-----------|------|------|------|------------|
| Liha, kg | 57 | 56 | 60 | Meat, kg |
| Piim, kg | 501 | 504 | 517 | Milk, kg |
| Munad, tk | 129 | 136 | 137 | Eggs, pcs. |

Karusloomakasvatus põllumajanduslikes majapidamistes, 2009–2011^a*Fur farming in agricultural holdings, 2009–2011^a*

| Näitaja | 2009 | 2010 | 2011 | Indicator |
|---------------------------|---------|---------|---------|------------------------------|
| Loomade arv | | | | Number of animals |
| aasta algul | 53 478 | 54 547 | 56 175 | at the beginning of the year |
| juurdesünd | 125 094 | 123 339 | 135 231 | births |
| ost | 2 614 | 61 | 40 | purchases |
| tapetud nahkade saamiseks | 124 692 | 119 748 | 134 221 | killed for furs |
| müük | 141 | 213 | 89 | sale |
| aasta lõpus | 54 547 | 56 175 | 56 086 | at the end of the year |
| Nahkade müük | | | | Sale for furs |
| parkimata nahad | | | | pelt |
| arv | 104 479 | 121 183 | 125 318 | number, |
| keskmine hind, eurot | 19 | 33 | 40 | average price, euros |
| pargitud nahad | | | | leather |
| arv | 3 548 | 2 459 | 2 592 | number, |
| keskmine hind, eurot | 29 | 33 | 31 | average price, euros |

^a Põllumajanduslikes majapidamistes kasvatatakse hõberebaseid, sinirebaseid, naaritsaid, tšintšiljasid ja muid karusloomi.

^a Silver foxes, blue foxes, minks, chinchillas and other fur animals are grown in agricultural holdings.

Taskuteatmik on koostatud riiklike statistiliste vaatluste „Taimekasvatus“, „Loomakasvatus“, „Põllumajandussaadused“, „Teravili“, „Taime- ja loomakasvatussaaduste ressurss ja kasutamine“, „Põllumajandus-, metsamajandus- ja kalandusettevõtete majandusnäitajad“ ning „Põllumajanduse majanduslik arvestus“ andmetel.

Alushind – kauba või teenuse ühiku eest ostjalt saadav hind (tootjahind), millest on lahutatud tootmaksud ja liidetud selle toote tootmise või müügi eest saadud tootetoetused.

Brutolisandväärtus – põllumajanduse majandusharu toodang miinus vahetarbimine.

Ettevõtjatulu – tegevuse ülejääk või segatulu miinus makstud rent ja makstud intressid pluss saadud intressid.

Keskmine hind – hind ilma käibemaksuta.

Koduad – majapidamise muust maast eraldi käsitletav maa, kus aiasaadusi kasvatatakse oma pere tarbeks (saadusi müüakse ainult siis, kui neid jääb üle). Koduaia hulka ei kuulu iluaiaid (pargid, muruplatsid).

Lihatoodang – tunnustatud lihakäitlemisettevõtetele või kokkuostjatele tapaks, k.a. ekspordiks (väljavedu Eestist nii väljapoole Euroopa Liitu kui ka teistesse Euroopa Liidu riikidesse) müüdnud ning majapidamistele kuuluvates tapapunktidest tapetud või teenustööna mujal tappa lastud loomade liha.

Looduslik (püsi)rohumaa – maa, mis ei ole külvikordade süsteemis ja mida kasutatakse haljasmassi või heina tootmiseks või karjatamiseks või säilitatakse heades põllumajandus- ja keskkonnatingimustes (taimestik kasvab külvatuna või isekülvina). Püsirohumaa hulka kuulub ka mitmeaastaste heintaimede pind, mida on kasutatud viis aastat või kauem.

Loomade kokkuostjad – ettevõtted, kelle põhitegevusala on liha ja lihatoodete tootmine, töötlemine ja säilitamine (Eesti majanduse tegevusalade klassifikaatori (EMTAK 2008) järgi).

Netolisandväärtus – brutolisandväärtus miinus põhivara kulum.

Piima kokkuostjad – ettevõtted, kelle põhitegevusala on piimatoodete tootmine ja piima kokkuost (Eesti majanduse tegevusalade klassifikaatori (EMTAK 2008) järgi).

Puukool – pind, kus avamaal kasvatatakse puu-, viljapu-, marjapõõsa- või ehistaimeistikuid aeda, parki jm istutamiseks (v.a metsamaal oma tarbeks kasvatatavad puuistikud).

Põhivara kulum – põhivara hulka kuuluvate kaupade prognoositav kulumine ja vananemine arvestusperioodil. Põhivara kulumit ei arvestata varude ja lõpetamata toodangu, mittetoodetud vara (maa, maavarad, patenteeritud varad) ja põllumajandusloomade puhul.

Põllumaa – regulaarselt vastavalt külvikordadele töödeldav maa.

Põllumajanduse majandusharu toodang – põllumajanduslike majapidamiste põllumajandusliku toodangu ja eraldamatute mittepõllumajanduslike kõrval- ja tegevusalade kaupade ja teenuste summaarne väärtus.

Põllumajanduslik kodumajapidamine – majandusüksus, kus põllumajandusmaad on alla ühe hektari, kuid on vähemalt 50 ruutmeetrit köögiviljamaad või kolm viljapuud või kuus marjapõõsast või kümme küülikut või kümme kodulindu või teisi põllumajandusloomi või kolm mesipuu, ja kus toodetakse põllumajandussaadusi peamiselt oma tarbeks.

Põllumajanduslik majapidamine – ühtse majandusliku ja tehnilise juhtimisega tootmisüksus, kus toodetakse põllumajandussaadusi või säilitatakse maad heades põllumajandus- ja keskkonnatingimustes ja:

- kus on vähemalt üks hektar kasutatavat põllumajandusmaad või

- kus on alla ühe hektari kasutatavat põllumajandusmaad ja kus toodetakse põllumajandussaadusi peamiselt müüjiks.

Üksused, kus põllumajandussaadusi ei toodeta, kuid säilitatakse maad heades põllumajandus- ja keskkonnatingimustes, loetakse põllumajanduslike majapidamiste hulka kuuluvaks alates 2007. aastast.

Põllumajandusmaa – vaatlusaastal põllumajandussaaduste tootmiseks kasutatav või heades põllumajandus- ja keskkonnatingimustes säilitatav maa (sh põllumaa, puusirohumaa, viljapuu- ja marjaaiad, puukoolid, koduaiad).

Põllumajandussaaduste kokkuost – põllumajandussaaduste ost töötlemise, osalise töötlemise ja/või edasimüümise eesmärgil Eesti põllumajandustootjatelt.

Ressursi kasutamine – eksport pluss varude muutus (varud perioodi lõpul miinus varud perioodi algul) pluss kohalik tarbimine.

Ressurss – saak (toodang) pluss import.

Ressurss ja selle kasutamine – hõlmab kõiki toodangu liikumise etappe, arvestatud on nii töötlemata kui ka töödeldud saadusi. Töödeldud saaduste ümber-arvestamiseks töötlemata saadusteks või vastupidi kasutatakse vastavaid koefitsiente. Taime-kasvatussaaduste ressursi ja selle kasutamise andmed on põllumajandusaasta kohta.

Standardkogutulu – majapidamises toodetud põllumajandustoodangu väärtuse ja selle tootmiseks tehtud erikulutuste vahe. Standardkogutulu arvutamisel taime-kasvatuses lahutatakse kogutoodangu väärtusest seemne, väetise ja taime-kaitsevahendite maksumus, toodangu kuivatuskulud ja muud muutuvkulud. Looma-kasvatuses lahutatakse standardkogutulu arvutamisel kogutoodangu väärtusest sööda maksumus ja muud muutuvkulud. Toodangu väärtuse hulka kuuluvad ka toodangu liigile makstavad otsetoetused.

Tegevuse ülejääk/segatulu – tootmisteguritulu miinus hüvitised töötajale.

Teravilja ja rapsiseemne kokkuostjad – ettevõtted, kelle põhitegevusala on teravilja jahvatamine, loomasööda tootmine, linnasetootmine, teravilja hulgimüük ja taimeõli tootmine (Eesti majanduse tegevusalade klassifikaatori (EMTAK 2008) järgi).

Toodang – müük, naturaalne töötasu, varude muutus aastast ja üksusesisene tarbimine. Põllumajandustoodangusse arvestatakse üksusesisest tarbitud, teise tegevusala tavaliselt mitteturustatavad tooted (taimekasvatuses toodetud loomasööt).

Tootmisteguritulu – netolisandväärtus miinus muud tootismaksud pluss muud tootmistoetused.

Vahetarbimine – kõikide tootmisprotsessis sisendina kasutatud kaupade ja teenuste väärtus, välja arvatud põhivara, mille tarbimine kirjeldatakse kulumina.

Viljapuu- ja marjaaiad – viljapuude ja aiamarjakultuuride (v.a maasikad) pind.

The pocket-sized reference book is based on the data collected by statistical surveys "Crop farming", "Livestock farming", "Agricultural products", "Grain", "Balance sheets of crop and animal products", "Economic indicators of agricultural, forest and fishery enterprises" and "Economic accounts of agriculture".

Agricultural holding – a single unit both technically and economically, which has single management and which produces agricultural products or maintains its land which is no longer used for production purposes in good agricultural and environmental condition, where:

- there is at least one hectare of utilised agricultural land,
- or there is less than one hectare of utilised agricultural land and agricultural products are produced mainly for sale.

Units where agricultural products are not produced but only land is maintained in good agricultural and environmental condition are included starting from 2007.

Agricultural household plot – a production unit, where there is less than one hectare of agricultural land, but at least 50 square metres of a kitchen garden or at least three fruit trees or six berry bushes or ten rabbits or ten domestic fowls or other farm animals or at least three beehives, and where agricultural products are produced mainly for own use.

Agricultural land – area utilised in the reference year for agricultural production or maintained in good agricultural and environmental condition (incl. arable land, permanent grassland, fruit and berry plantations, nurseries and kitchen gardens).

Arable land – land worked regularly, generally under crop rotation system.

Average price – price without the value added tax.

Basic price – the price obtained by the producer corresponds to the producer price (not including invoiced VAT). Basic price can be obtained from the producer price by adding subsidies less taxes (other than VAT) on products.

Buyers of animals – enterprises whose main economic activity is production, processing and preserving of meat and meat products by Estonian classification of economic activities 2008 (EMTAK 2008).

Buyers of cereals and rapeseed – enterprises whose main economic activity is milling of cereals, producing of fodder, producing of malt, wholesale of cereals and producing of vegetable oil by Estonian classification of economic activities 2008 (EMTAK 2008).

Buyers of milk – enterprises whose main economic activity is manufacture of dairy products and purchase of milk by Estonian classification of economic activities 2008 (EMTAK 2008).

Entrepreneurial income – operating surplus or mixed income less rents paid and interest paid plus interest received.

Factor income – net value added less other production charge plus other subsidies on production.

Fixed capital consumption – the foreseeable wear and tear and obsolescence of fixed capital goods over the accounting period represent a charge which is implicit as long as the item is not replaced by a new acquisition. The consumption of fixed capital is not calculated for either stocks or work in progress, or non-produced assets (land, underground deposits and patented assets), or animals giving agricultural production.

Fruit and berry plantations – area containing fruits and berries (except for strawberries).

Gross value added – the output of agricultural industry less total intermediate consumption.

Intermediate consumption – the value of all goods and services used as inputs in the production process, excluding fixed assets whose consumption is recorded as fixed capital consumption.

Kitchen garden – land separated from the rest of the holding, devoted to the cultivation of products which are mainly for consumption by persons living on the holding and not for sale (only occasional surplus of products is sold off). Pleasure gardens (parks and lawns) are not included.

Meat production – meat sold to enterprises processing meat and meat products (slaughterhouses) or to purchasers for slaughter, incl. exports (from Estonia to the EU and also to non-EU countries) and slaughtered in slaughterhouses belonging to holdings or slaughtered elsewhere as service.

Net value added – gross value added less fixed capital consumption.

Nursery – area of young ligneous (woody) plants, fruit trees, berry bushes or ornamental young plants grown in the open air for subsequent transplantation (except non-commercial nurseries of forest trees in woods).

Operating surplus / mixed income – factor income less compensation of employees.

Output – sales, payments in kind, change in stocks and intra-unit consumed products. Within the industry non-marketable intra-unit consumed products (such as animal feeding stuff produced in crop production) are included in agricultural output.

Output of agricultural industry – the sum of the agricultural goods and services produced by agricultural units and inseparable non-agricultural goods and services produced by agricultural units.

Permanent grassland – land not included in the crop rotation system, used for the permanent production (five years or longer) of green forage crops, whether sown or self-seeded and whether used for grazing or for harvesting as hay or silage or only maintained in good agricultural and environmental condition.

Purchase of agricultural products – buying of agricultural production in purpose of processing, partial processing and/or resale from Estonian agricultural producers.

Resources – production plus imports.

Standard gross margin – the difference of the holding's output and the value of specific costs. In crop production, the cost of seeds, fertilizers, plant protection products, drying and other variable costs are deducted from the value of total output. In livestock production, the cost of feed and other variable costs are deducted from the value of total output. Also, subsidies provided for the relevant type of product are included in value of output.

Supply balance sheets – refer to all marketing stages. Supply balance sheets are provided for both processed and unprocessed products. The relevant coefficients are used to convert the processed products into unprocessed products or vice versa. The supply balance sheets are provided for the crop year.

Use of resources – exports plus change in stocks (final stocks at the end of the period minus initial stocks at the beginning of the period) plus domestic use.

Toimetanud Anu Jalak
Inglise keel: Elina Härsing
Küljendus: Alar Telk
Kaanekujundus: Maris Valk

*Edited by Anu Jalak
English by Elina Härsing
Layout by Alar Telk
Cover design by Maris Valk*

Kirjastanud Statistikaamet,
Endla 15, 15174 Tallinn
Trükkitud Ofset OÜ,
Paldiski mnt 25, 10612 Tallinn

Juuli 2012

*Published by Statistics Estonia,
15 Endla St, 15174 Tallinn
Printed by Ofset Ltd,
25 Paldiski Rd, 10612 Tallinn*

July 2012